

# Meter Mounting Equipment

## Colorado Area



**MILBANK®**





Charles A. Milbank  
1879-1966



Bill Martin  
1916-1998



Robert F. Waldrop,  
1922-2002



Robert F. Waldrop, II  
Chairman



Katrina Waldrop Henke  
Vice Chairman

## Milbank–Quality Metering Products for 80 Years

Milbank Manufacturing Company was established in 1927 by Charles A. Milbank. Originally, the company manufactured high voltage switches; however, by 1941 Milbank devoted itself primarily to the manufacture of sheet metal enclosures and related equipment for the electrical generation and distribution industry. Today we are an industry leader in the manufacture of electrical meter sockets. Through a national network of manufacturer's representatives we provide wholesale electrical distributors with quality electrical products for the utility, contractor, industrial and OEM markets.

As the meter standards have changed, Milbank has been successful in adapting its product line to these changes. Our full scale engineering department designs products to meet customer specifications and satisfy all utility requirements. Milbank's employee base of over 1,000 workers, along with our five manufacturing

facilities comprising almost 550,000 square feet give us the flexibility to schedule, produce, and ship orders quickly. Currently, Milbank manufactures over 10,000 different catalog items, and this list continues to grow. Our unique product offering includes: Residential & Commercial Meter Sockets; Residential & Commercial Meter Pedestals; RV/MH Power Outlets, Service Pedestals, and Transformers; Commercial & Industrial Electrical Enclosures; Circuit Breakers; Disconnects & Safety Switches; Safety Sockets; Utility & Residential Secondary Pedestals; Hubs, and related accessories. If you don't find a unit in this catalog to service your needs, send us your specifications and we will be happy to work with you.

Our success has come from a loyal customer base that can rely on us to build quality products at a fair price in a timely manner. Our willingness and ability to design and produce new products to meet our customer demands

is an important factor to remain competitive in today's electrical market.

Milbank has been serving the electric utility & wholesale distribution industries for 80 years with innovative, quality engineered products. So remember us for all of your meter mounting and related requirements, and we will be happy to serve you as we have in the past—with dependable service and quality products!

We take great pride in being one of the few family-owned businesses left in our industry. We are a third generation run business and truly believe that...

**FAMILY MAKES A  
DIFFERENCE!**



<b>CATALOG NUMBER LOGIC</b>	<b>3</b>
<b>DISCONNECTS (30-200 AMP)</b>	
30 & 60 Amp Fusible/Non-Fusible AC Disconnects	4
AC Disconnect with GFCI Protection/SPA Box	5
<b>SINGLE POSITION</b>	
125/200 Amp - 4 & 5 Terminal - Ringless - 600 VAC	6
200 Amp - 4 & 5 Terminal-Ringless/Ring Type-600 VAC	7
200 Amp - 4 Terminal - Jaw Clamping Lever - Ringless-600 VAC	8
200 Amp - 4, 5 & 7 Terminal - Heavy Duty Lever Bypass - Ringless - 600 VAC	9
200 Amp - 5 & 7 Terminal - Ringless - 600 VAC	10
320 Amp Continuous - 4 & 7 Terminal - Heavy Duty Lever Bypass - 600 VAC	11
320 Amp - 4 & 5 Terminal - Heavy Duty - Ringless - 600 VAC	12
<b>MULTIPLE POSITION</b>	
200 Amp - 4 Terminal - Horizontal Gangs - Ringless	13
125 Amp - Condominium Metering Banks - 4 Terminal - 1Ø3W - 120/240 VAC	14
200 Amp - Condominium Metering Banks - Lever Bypass - 120/240 VAC	15-16
<b>METER MAINS</b>	
100/150/200 Amp - 4 Terminal - 300 VAC - Meter Main	17
150/200 Amp - Ringless Meter Mains - 5 Terminal - 22K AIC	18
200 Amp - Meter Socket/Load Center - 4 Terminal - Ringless	19
320 Amp - 4 Terminal - Ringless - Meter Main with Side Wireway	20
<b>CT RATED</b>	
20 Amp - 5, 6, 8, 13, & 15 Terminal - 600 VAC - Current Transformer - Test Switch Provision	21
Test Switches - 4, 7, & 10 Pole - 600 VAC - Per ANSI C12.9 Standard	22
Milbank Test Switch Worksheet	23
<b>SERVICE PEDESTALS</b>	
200 Amp - 4 Terminal - Service Entrance Pedestal - Lever Bypass Ringless - 120/240 VAC	24
200 Amp - Series U5701 & U5702 Ringless Metered Pedestals	25
200 Amp - Series U5136 & U5137 Ringless Metered Pedestals	26
200 Amp Series Ringless Metered Pedestals Ordering Information	27
<b>POWER OUTLETS</b>	
125 Amp - 5 Terminal - Ringless - Jaw Clamping Lever - Metered Power Outlet	28
<b>COMMERCIAL PEDESTALS</b>	
Commercial Meter Pedestals Overview	29
Applications & Accessories	30
<b>MISCELLANEOUS</b>	
Accessories	31-32
UQFP Plug-In Series Circuit Breakers	33
UQFB Bolt-On Series Circuit Breakers	34
Conduit & Ampacity Information	35
Energization of Electrical Equipment	36
Materials and Finishes	37
Meter Forms	38
Watt-hour Meter Forms-Standard Forms-Transformer Rated or Self-Contained	39
Standard NEMA Configurations	40
Utility Index	41
Product Index	42
Additional Milbank Products	43

# Catalog Number Logic

**U = UL Listed**  
**S = Non-UL Listed**  
**UAP = UL / Alum / Painted**

**Milbank  
Drawing  
Number**

**TG = Triplex Ground**  
**QG = Quadplex Ground**

**KK = Horn By-Pass  
Provision**

**Specific Utility  
Designation**

**Barrel Lock**

**U7040-RL-TG-KK-5T9-BL-AUT**

## HUB OPENINGS / CLOSING PLATES

<b>O</b>	Plain Top	<b>WL</b>	1"	For -RL Opening
<b>RL</b>	Small Hub Opening	<b>YL</b>	1¼"	For -RL Opening
<b>R</b>	Large Hub Opening	<b>ZL</b>	1½"	For -RL Opening
<b>XL</b>	Small Closing Plate	<b>DL</b>	2"	For -RL Opening
<b>X</b>	Large Closing Plate	<b>EL</b>	2½"	For -RL Opening
<b>RXL</b>	Large Hub Opening adapted to small Closing Plate.	<b>F</b>	3"	For -R Opening
		<b>G</b>	3½"	For -R Opening
<b>RRL</b>	Large Hub Opening adapted to small Hub Opening	<b>H</b>	4"	For -R Opening

## Fifth Terminal Designation

- 5T6 installed at 6:00
- 5T9 installed at 9:00

**Barrel Lock / Guard Provision**

**U2448-X-QG-5T9-K3-BLG-ARE**

**Milbank  
Drawing  
Number**

**TG = Triplex Ground**  
**QG = Quadplex Ground**

**Specific Utility Designation**

**Lugs [1Ø or 3Ø – 350 or 600 kcmil]**

- Single [K1, K3, K5, K7]
- Twin [K2, K4, K6, K8]



U3802



U3832

## PROFILE

Milbank's air conditioner disconnect has a removable hinged cover which makes wiring a breeze. Our compact design meets all wire bending space requirements in the NEC and, also, complies with article 440-14 in the NEC. To ensure the safest conditions, we designed our disconnect pullers to be removable or they may be reinstalled in the off position. Another safety feature is the padlock provision on the front cover. As with all Milbank products, our enclosure is constructed of G90U galvanized steel and finished with an attractive, light gray, baked powder coating. Our state of the art finish combines epoxy and polyester hybrid resins into a hybrid powder coating which is then electrostatically applied. This offers a durable, nonfading finish.

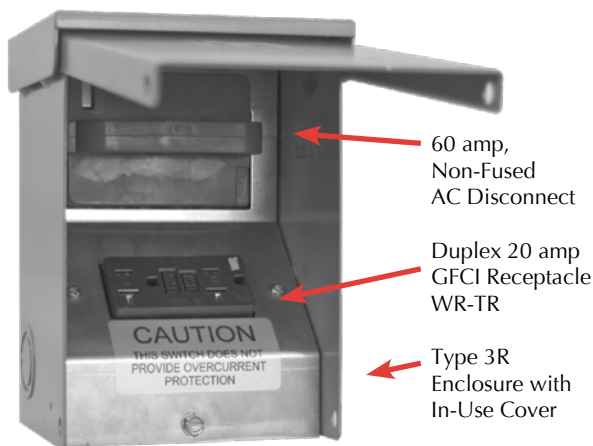
## TECHNICAL INFORMATION

AMP	TYPE	CATALOG NUMBER	MAX H.P.	WT. @	LINE & LOAD CONNECTOR WIRE RANGE		GROUND CONNECTOR WIRE RANGE	DIMENSIONS			WIRE RATING	
					CU	AL		D"	W"	H"	CU °C	AL °C
60	NONFUSIBLE	U3802	10	3.25	#14-#2 AWG	#12-#2 AWG	#14-4 AWG	2½	5	7½	60°/75°	60°/75°
30	FUSIBLE	U3832	3	2.5	#14-#3 AWG	#14-#3 AWG	#14-3 AWG	2⅞	5	7	60°/75°	60°
60	FUSIBLE	U3860	10	3.3	#14-#3 AWG	#14-#3 AWG	#14-3 AWG	3	5	9¼	60°/75°	60°/75°

- ✓ **UL Listed as Enclosed Pullout Switch.**
- ✓ **1Ø, 240 VAC.**
- ✓ **Type 3R Rainproof**
- ✓ **One-inch concentric knockouts**

*Utility requirements for this equipment may vary. Always consult the serving utility for their requirements before ordering or installing equipment in this catalog.*

## Combination AC Disconnect / 20 Amp GFCI Receptacle—Together in 1 Box



U3822-20GWR

- Meets NEC # 210.63 Requirements\*
- UL Listed as Power Outlet
- Type 3R Enclosure
- In-Use Cover\*\*
- Duplex Ground Connector
- 1" Concentric Knockouts

### AC DISCONNECT

- 1Ø, 240 Volt
  - 60 amp, Non-Fused
- ### GFCI RECEPTACLE
- 20 amp
  - Reset/Test Button
  - Weather Resistant/Tamper Resistant
  - Meets NEC #406.8 Requirements

\* NEC® #210.63 Heating, Air-Conditioning and Refrigeration Equipment Outlet.  
The receptacle shall be located on the same level and within 7.5 m (25 ft.) of the heating, air-conditioning and refrigeration equipment.

\* NEC® #210.68 Ground-Fault Circuit-Interruptor protection for personnel.

\* NEC® #406.8 receptacles in damp or wet conditions

AMP	TYPE	CATALOG NUMBER	MAX H.P.	WT. @ #	AC DISCONNECT WIRE RANGE		GROUND CONNECTOR WIRE RANGE	DIMENSIONS			WIRE RATING	
					CU	AL		D"	W"	H"	CU °C	AL °C
60	NONFUSIBLE	U3822-20GWR	10	6	#14-#2 AWG	#12-#2 AWG	#14-#4 AWG	4.8	5.25	7.4	60°/75°	60°/75°

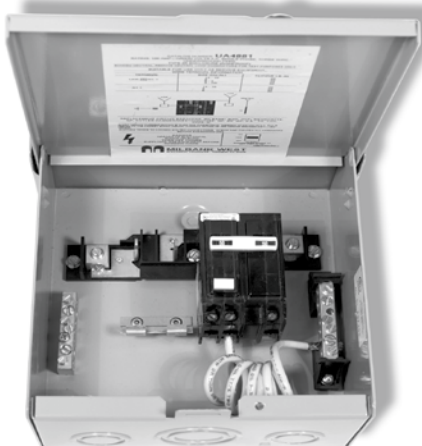
To ensure the safest conditions, Milbank disconnect pullers are designed to be reversible so they may be reinstalled in the OFF position. All units are designed with a padlock provision on the cover for security.

**\*\*Note:** U3822-20GR cover rated as *IN-USE COVER* (Cover may be closed with cords plugged into receptacle).

\*Reprinted with permission from NFPA 70-2002, *National Electrical Code®*, Copyright 2001, National Fire Protection Association, Quincy, MA 02269. This reprinted material is not the complete and official position of the NFPA on the referenced subject, which is represented only by the standard in its entirety. National Electrical Code® and NEC® are registered trademarks of the National Fire Protection Association, Quincy, MA.

## Hot Tub Disconnect or Sub Panel Breaker Enclosure—Type 3R

### Spa Box with GFCI Protection



- 240 volt ground fault protection
- UL listed, Type 3R rainproof
- Milbank reliability
- Easy installation
- 2 pole, 50 or 60 amp GFCI breaker protection
- Compact size:  
8-1/2" H x 7-1/2" W x 3-3/4" D
- 3 or 4 wire installation
- 1Ø, 120 / 240 VAC
- Standard package of 12
- 2 extra one-pole breaker spaces
- 100 amp overall rating

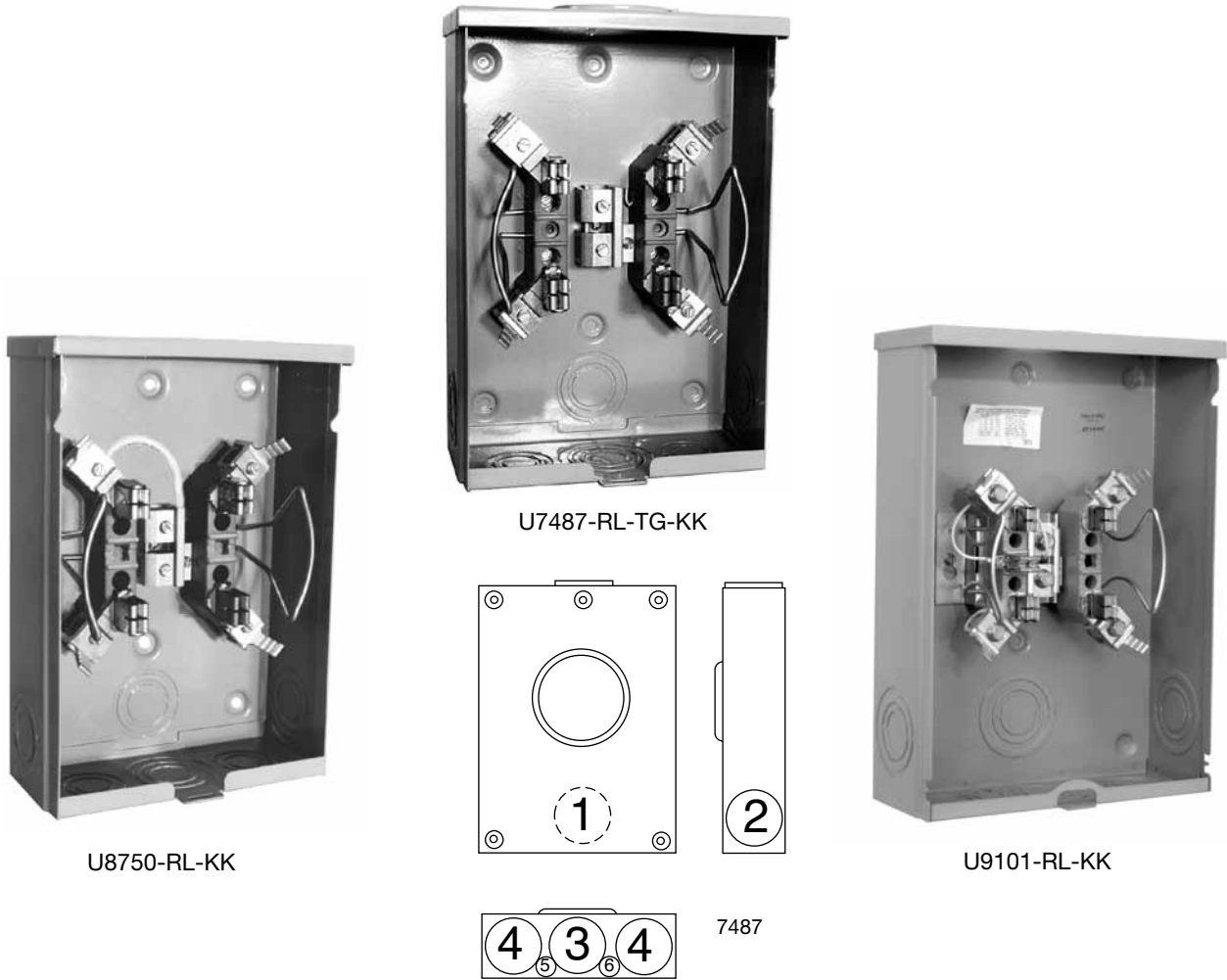
### Sub Panel Breaker Enclosure

- Use as a 100 amp, 4 circuit sub panel enclosure



AMP	TYPE	CATALOG NUMBER	WT. @ #	LINE CONNECTOR WIRE RANGE		GROUND CONNECTOR WIRE RANGE	DIMENSIONS		
				CU	AL		D"	W"	H"
50	BREAKER	U4881-0-50GB	8	#14-1/0	#14-1/0	#14-1/0	3¾	7½	8
60	BREAKER	U4881-0-60GB	8	#14-1/0	#14-1/0	#14-1/0	3¾	7½	8





### 125 AMP – 4 & 5 TERMINAL – RINGLESS

TERM	SERVICE	CATALOG NUMBER	HUB	CONNECTORS CU/AL		BYPASS	DIMENSIONS			CONCENTRIC KO'S					
				LINE	LOAD		D"	W"	H"	1	2	3	4	5	6
4	OH/UG	U7487-RL-TG-KK	H.O.	#6-2/0	#6-2/0	HORN	3 <sup>5</sup> / <sub>16</sub>	8	11 <sup>1</sup> / <sub>2</sub>	1 <sup>1</sup> / <sub>2</sub>	1 <sup>1</sup> / <sub>2</sub>	2	1 <sup>1</sup> / <sub>4</sub>	—	1 <sup>1</sup> / <sub>4</sub>
4	OH	U8750-RL-KK	H.O.	#6-2/0	#6-2/0	HORN	3 <sup>5</sup> / <sub>16</sub>	8	11 <sup>1</sup> / <sub>2</sub>	1 <sup>1</sup> / <sub>2</sub>	1 <sup>1</sup> / <sub>2</sub>	2	1 <sup>1</sup> / <sub>4</sub>	—	1 <sup>1</sup> / <sub>4</sub>

### 200 AMP – 5 TERMINAL – RESIDENTIAL – RINGLESS

SERVICE	CATALOG NUMBER	HUB	CONNECTORS CU/AL		BYPASS	DIMENSIONS			CONCENTRIC KO'S					
			LINE	LOAD		D"	W"	H"	1	2	3	4	5	6
OH/UG	U9101-RL-TG-KK	H.O.	#6-350	#6-350	HORN	4 <sup>1</sup> / <sub>8</sub>	11	15 <sup>1</sup> / <sub>2</sub>	2 <sup>1</sup> / <sub>2</sub>	2 <sup>1</sup> / <sub>2</sub>	2 <sup>1</sup> / <sub>2</sub>	2 <sup>1</sup> / <sub>2</sub>	1 <sup>1</sup> / <sub>4</sub> , 1 <sup>1</sup> / <sub>2</sub>	1 <sup>1</sup> / <sub>4</sub>

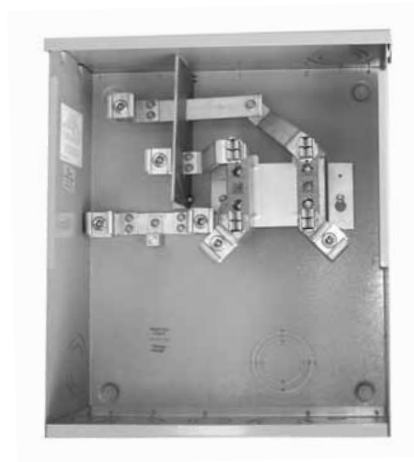
**FIFTH TERMINAL:** For field mounted fifth terminal order catalog number **5T8K2** for 125 amp unit.

**BYPASS:** Horn type bypass is provided.

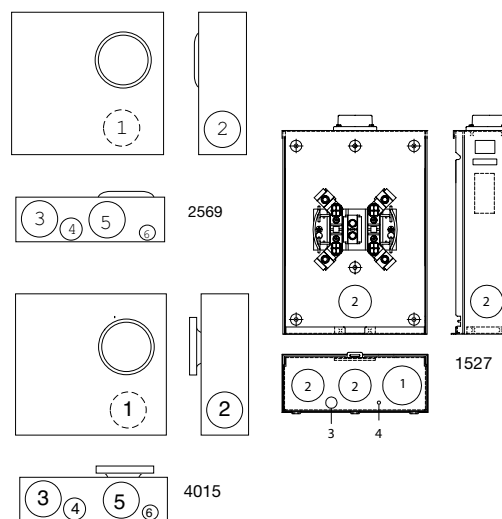
*Utility requirements for this equipment may vary. Always consult the serving utility for their requirements before ordering or installing equipment in this catalog.*



U2569-O



U4015-O



## 200 AMP – SINGLE POSITION – 4 TERMINAL – RINGLESS

SERVICE	CATALOG NUMBER	HUB	CONNECTORS	DIMENSIONS			CONCENTRIC KO'S					
			CU/AL	D"	W"	H"	1	2	3	4	5	6
UG	U1527-XL	C.P.	#2-350	4 $\frac{1}{8}$	11	15 $\frac{1}{2}$	2	2	2	2 $\frac{1}{2}$	1 $\frac{1}{4}$ , 1 $\frac{1}{2}$	1 $\frac{1}{4}$

**FIFTH TERMINAL:** For field mounted fifth terminal order catalog number **K5T** to fit into square opening at the 9 o'clock position.

**HUBS:** For proper hub selection see the hub suffix chart on accessory page.

**CONNECTORS:** Extruded aluminum connectors are tin plated.

## 200 AMP – SINGLE POSITION – 4 TERMINAL–SIDE WIREWAY– RINGLESS

SERVICE	CATALOG NUMBER	HUB	CONNECTORS CU/AL		DIMENSIONS			CONCENTRIC KO'S					
			LINE	LOAD	D"	W"	H"	1	2	3	4	5	6
UG	U2569-O	BLANK	3/8-16 STUDS	#2-350	4 $\frac{1}{2}$	13	19	2 $\frac{1}{2}$	2 $\frac{1}{2}$	3	1 $\frac{1}{2}$	2 $\frac{1}{2}$	1 $\frac{1}{4}$ , 1 $\frac{1}{2}$

## 200 AMP – SINGLE POSITION – 4 TERMINAL – RING TYPE

SERVICE	CATALOG NUMBER	HUB	CONNECTORS	DIMENSIONS			CONCENTRIC KO'S					
			CU/AL	D"	W"	H"	1	2	3	4	5	6
UG	U4015-O	BLANK	#6-350	6	14	16 $\frac{1}{2}$	2 $\frac{1}{2}$	2 $\frac{1}{2}$	3	1 $\frac{1}{2}$	2 $\frac{1}{2}$	1 $\frac{1}{4}$ , 1 $\frac{1}{2}$

**FIFTH TERMINAL:** For field mounted fifth terminal order catalog number **K5T** to fit into square opening at the 9 o'clock position.

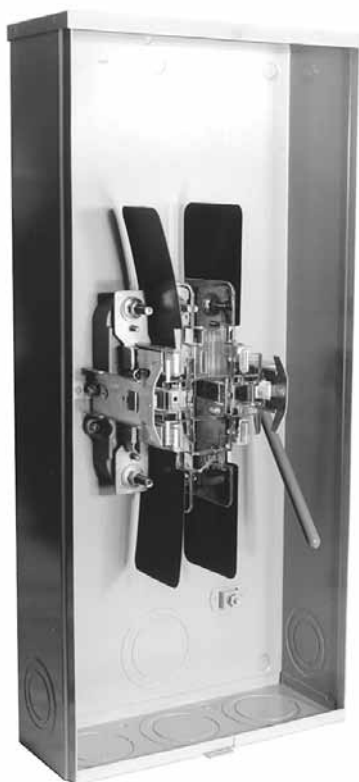
**HUBS:** For proper hub selection see the hub suffix chart on the accessory page.

**CONNECTORS:** Extruded aluminum connectors are tin plated.

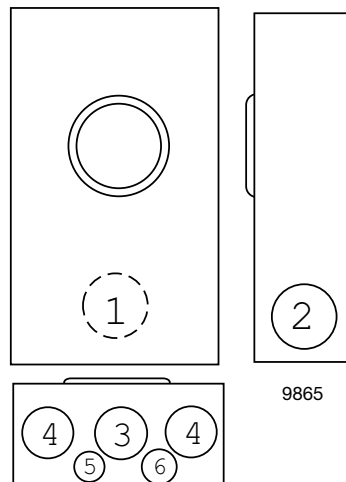
**SEALING RINGS:** The above ring type units are supplied with an **MR-4** screw type sealing ring as standard.

*Utility requirements for this equipment may vary. Always consult the serving utility for their requirements before ordering or installing equipment in this catalog.*





U9865-RRL



### 200 AMP—SINGLE POSITION—4 TERMINAL—RINGLESS—1Ø3W

SERVICE	CATALOG NUMBER	HUB	CONNECTORS CU/AL		BYPASS	DIMENSIONS			CONCENTRIC KO'S					
			LINE	LOAD		D"	W"	H"	1	2	3	4	5	6
OH/UG	U9865-RRL	H.O.	3/8 x 16 STUD	3/8 x 16 STUD	LEVER	4 7/8	13	28 1/4	3	2 1/2	3	3	1/4	1/4, 1/2

**FIFTH TERMINAL:** For field installed fifth terminal order catalog number **K3866**. May be installed in 6 o'clock or 9 o'clock position.

**HUBS:** For proper hub selection refer to the hub suffix chart on the Accessory page.

**LEVER BYPASS:** Lever supplies clamping action on meter spades and also operates bypass device.

**CONNECTORS:** Socket is supplied with 3/8" - 16 hex head nuts with Belleville washers. For connector lug kits, order as extra from chart on page 30. Separate lug kits are required for line and load.

*Utility requirements for this equipment may vary. Always consult the serving utility for their requirements before ordering or installing equipment in this catalog.*



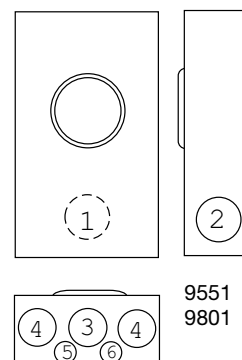
U9801-RXL



U9551-RRL



U9701-RXL

9551  
9801**200 AMP—4 TERMINAL—RINGLESS—1Ø3W**

SERVICE	CATALOG NUMBER	HUB	CONNECTORS CU/AL		BYPASS	DIMENSIONS			CONCENTRIC KO'S					
			LINE	LOAD		D"	W"	H"	1	2	3	4	5	6
OH/UG	U9801-RXL	C.P.	#6-350	#6-350	LEVER	4 $\frac{7}{8}$	13	19	3	2 $\frac{1}{2}$	3	3	$\frac{1}{4}$	$\frac{1}{4}, \frac{1}{2}$

**FIFTH TERMINAL:** For field mounted fifth terminal, order as extra **K3866**.

**BYPASS:** Lever supplies clamping action on meter spades and also operates bypass device.

**CONNECTORS:** Units are supplied with extruded aluminum connectors and bonded neutral with a grounding stud.

**200 AMP—5 TERMINAL—RINGLESS—1Ø3W OR 3Ø3W**

SERVICE	CATALOG NUMBER	HUB	CONNECTORS CU/AL		BYPASS	DIMENSIONS			CONCENTRIC KO'S					
			LINE	LOAD		D"	W"	H"	1	2	3	4	5	6
OH/UG	U9551-RRL	H.O.	#6-350	#6-350	LEVER	4 $\frac{7}{8}$	13	19	3	2 $\frac{1}{2}$	3	3	$\frac{1}{4}$	$\frac{1}{4}, \frac{1}{2}$

**HUBS:** For proper hub selection see the hub suffix chart on the accessory page.

**BYPASS:** Lever supplies clamping action on meter spades and also operates bypass device.

**CONNECTORS:** Units supplied with extruded aluminum connectors, a bonded neutral and a grounding stud.

**FIFTH TERMINAL:** Fifth terminal is supplied in the 6 o'clock position. Fifth terminal can be changed in the field from 6 o'clock to 9 o'clock position.

**200 AMP—7 TERMINAL—RINGLESS—3Ø4W**

SERVICE	CATALOG NUMBER	HUB	CONNECTORS CU/AL		BYPASS	DIMENSIONS			CONCENTRIC KO'S					
			LINE	LOAD		D"	W"	H"	1	2	3	4	5	6
OH/UG	U9701-RXL	C.P.	#6-350 kcmil	#6-350 kcmil	LEVER	4 $\frac{7}{8}$	13	19	3	2 $\frac{1}{2}$	3	3	$\frac{1}{4}$	$\frac{1}{4}, \frac{1}{2}$

**HUBS:** For proper hub selection see the hub suffix chart on the accessory page.

**BYPASS:** Lever supplies clamping action on meter spades and also operates bypass device.

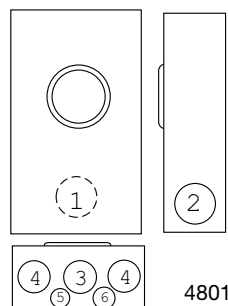
**CONNECTORS:** Units supplied with extruded aluminum connectors and bonded triplex ground.

**INSULATED NEUTRAL:** For field installed insulated neutral, order kit number **K1047**.

*Utility requirements for this equipment may vary. Always consult the serving utility for their requirements before ordering or installing equipment in this catalog.*



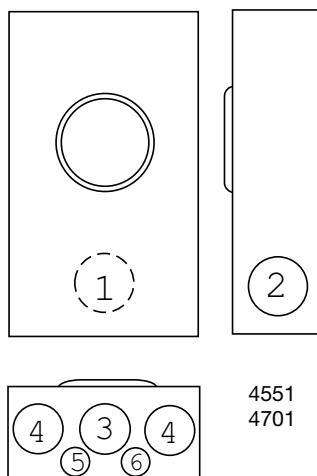
U4801-XL-5T9



4801



U4551-RRL


4551  
4701


U4701-RRL

### 200 AMP—5 & 7 TERMINAL—RINGLESS – 1Ø OR 1 3Ø3W

TERM	SERVICE	CATALOG NUMBER	HUB	CONNECTORS CU/AL		BYPASS	DIMENSIONS			CONCENTRIC KO'S					
				LINE	LOAD		D"	W"	H"	1	2	3	4	5	6
5	OH/UG	U4801-XL-5T9 <sup>1</sup>	C.P.	#6-350	#6-350	LEVER	4 <sup>7</sup> / <sub>8</sub>	13	19	3	2 <sup>1</sup> / <sub>2</sub>	3	3	¼	¼, ½
5	OH/UG	U4551-RRL	H.O.	#6-350	#6-350	LEVER	4 <sup>7</sup> / <sub>8</sub>	13	19	3	2 <sup>1</sup> / <sub>2</sub>	3	3	¼	¼, ½
7	OH/UG	U4701-RRL	H.O.	#6-350	#6-350	LEVER	4 <sup>7</sup> / <sub>8</sub>	13	19	3	2 <sup>1</sup> / <sub>2</sub>	3	3	¼	¼, ½

**HUBS:** For proper hub selection see the hub suffix chart on the accessory page.

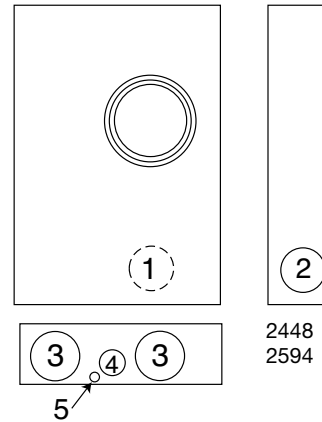
**BYPASS:** Lever bypass and the lever supplies clamping action on jaws.

<sup>1</sup> **FACTORY-INSTALLED FIFTH TERMINAL:** Includes factory installed fifth terminal in the 9 o'clock position.

Utility requirements for this equipment may vary. Always consult the serving utility for their requirements before ordering or installing equipment in this catalog.



U2448-X



## 320 AMP—4 &amp; 7 TERMINAL—SIDE WIREWAY—RINGLESS—OH/UG

TERMS	CATALOG NUMBER	PHASE	HUB	CONNECTORS CU/AL	FIFTH TERM KITS	BYPASS	DIMENSIONS			CONCENTRIC KO'S					
				LINE & LOAD			D"	W"	H"	1	2	3	4	5	6
4	U2448-X	1Ø3W	C.P.	3/8"-16 STUD	K3865	LEVER	6½	17¾	34⅞	3	3	4	1	¼	—
7	U2594-X	3Ø4W	C.P.	3/8"-16 STUD	—	LEVER	6½	19	34⅞	—	3	4	1	¼	—

**HUBS:** For proper hub selection see the hub suffix chart on the accessory page.

**BYPASS:** The lever supplies clamping action on meter spades and also operates bypass device.

**CONNECTORS:** Stud type units supplied with 3/8"-16 hex head nuts with Belleville washers. For 1Ø connector kits, order as extra: **K1539** (350 kcmil) or **K1540** (600 kcmil). For twin lug connectors order as extra: **K1350** (350 kcmil). For 3Ø connector kits, order as extra: **K3082** (350 kcmil) or **K3441** (600 kcmil). For twin lug connectors, order as extra: **K3441** (#4-600 kcmil or (2) 1/0-250 kcmil). Separate kits are required for both line and load.

**FIFTH TERMINAL:** Fifth terminal is available for field install.

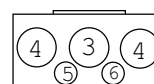
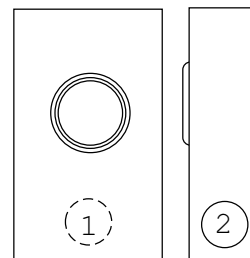
Utility requirements for this equipment may vary. Always consult the serving utility for their requirements before ordering or installing equipment in this catalog.



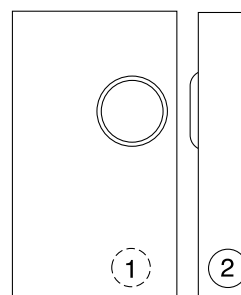
U1779-RRL



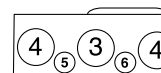
U3000-O-5T9-K3L-K2L



1779



3" KO—right side only


3000  
1797

### 320 AMP CONTINUOUS — 4 & 5 TERMINAL — HEAVY DUTY — RINGLESS — 600 VAC

TERM	SERVICE	CATALOG NUMBER	HUB	CONNECTORS CU/AL		BYPASS	DIMENSIONS			CONCENTRIC KO'S					
				LINE	LOAD		D"	W"	H"	1	2	3	4	5	6
5	OH	U1779-RRL-5T9-K3-K2	H.O.	#4-600 (1) 1/0-250 (2)	(2) #6-350	LEVER	4 $\frac{7}{8}$	13	38 $\frac{3}{4}$	3	2 $\frac{1}{2}$	3	3	$\frac{1}{4}$	$\frac{1}{4}, \frac{1}{2}$
5	UG	U3000-O-5T9-K3L-K2L	BLANK	#4-600 (1) 1/0-250 (2)	(2) #6-350	LEVER	4 $\frac{7}{8}$	15	30	3	3	3	3	$\frac{1}{4}$	$\frac{1}{4}, \frac{1}{2}$
4	UG	U1797-O-K3L-K2L	BLANK	#4-600 (1) 1/0-250 (2)	TWIN #6-350	LEVER	4 $\frac{7}{8}$	15	30	3	3	3	3	$\frac{1}{4}$	$\frac{1}{4}, \frac{1}{2}$

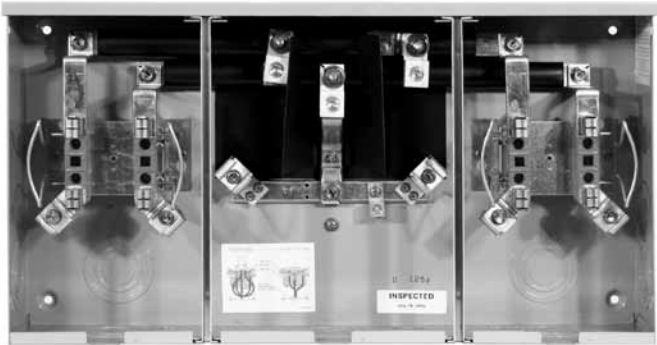
**HUBS:** For proper hub selection see the hub suffix chart on the accessory page.

**BYPASS:** The lever supplies clamping action and also operates bypass device.

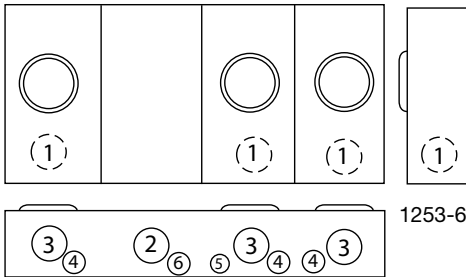
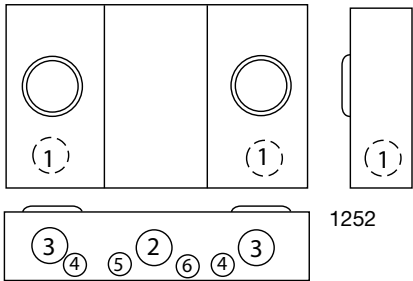
**FIFTH TERMINAL:** For field installed fifth terminal, order as extra **K3865**.

**FACTORY-INSTALLED FIFTH TERMINAL:** Includes factory installed fifth terminal in the 9 o'clock position.

Utility requirements for this equipment may vary. Always consult the serving utility for their requirements before ordering or installing equipment in this catalog.



U1252-X-K1



200 AMP / POSITION—4 TERMINAL—RINGLESS

# OF POS.	SERVICE	CATALOG NUMBER	HUB	CONNECTORS CU/AL		DIMENSIONS			CONCENTRIC KO'S					
				LINE	LOAD	D"	W"	H"	1	2	3	4	5	6
2	OH/UG	U1252-X-K1	C.P.	#6-350	#2-350	5 <sup>1</sup> / <sub>8</sub>	26 <sup>1</sup> / <sub>2</sub>	14	2 <sup>1</sup> / <sub>2</sub>	3	2 <sup>1</sup> / <sub>2</sub>	1 <sup>1</sup> / <sub>2</sub>	1 <sup>1</sup> / <sub>4</sub>	1
3	OH/UG	U1253-X-K3	C.P.	#4-600	#2-350	5 <sup>1</sup> / <sub>8</sub>	34 <sup>3</sup> / <sub>4</sub>	14	2 <sup>1</sup> / <sub>2</sub>	3	(3) 2 <sup>1</sup> / <sub>2</sub>	1 <sup>1</sup> / <sub>2</sub>	1 <sup>1</sup> / <sub>4</sub>	1
4	UG	U1254-X-K3	C.P.	#4-600	#2-350	5 <sup>1</sup> / <sub>8</sub>	42 <sup>7</sup> / <sub>8</sub>	16	2 <sup>1</sup> / <sub>2</sub>	3	(4) 2 <sup>1</sup> / <sub>2</sub>	1 <sup>1</sup> / <sub>2</sub>	1 <sup>1</sup> / <sub>4</sub>	1
5	UG	U1255-X-K4	C.P.	(2) #2-600	#2-350	5 <sup>1</sup> / <sub>8</sub>	54 <sup>7</sup> / <sub>8</sub>	16	2 <sup>1</sup> / <sub>2</sub>	3	(5) 2 <sup>1</sup> / <sub>2</sub>	1 <sup>1</sup> / <sub>2</sub>	1 <sup>1</sup> / <sub>4</sub>	1
6	UG	U1256-X-K4	C.P.	(2) #2-600	#2-350	5 <sup>1</sup> / <sub>8</sub>	63 <sup>1</sup> / <sub>16</sub>	18	2 <sup>1</sup> / <sub>2</sub>	3	(6) 2 <sup>1</sup> / <sub>2</sub>	1 <sup>1</sup> / <sub>2</sub>	1 <sup>1</sup> / <sub>4</sub>	1

**HUB:** For proper hub selection, refer to the hub suffix chart on the accessories page. For the **U1254-6** two hub openings are supplied and the extra opening is closed with a closing plate as standard.

**FIFTH TERMINAL:** For field mounted fifth terminal for **U1252-6**, order catalog number K5T (9 o'clock position).

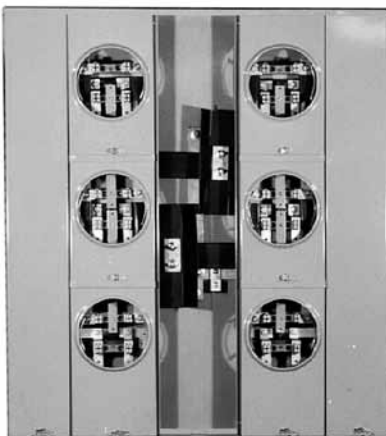
**CONNECTORS:** Extruded aluminum connectors are tin plated.

**BUSSING:** Bussing is 5/16" x 1" aluminum on the **U1252-1253**. On the **U1254-6** gangs, the bussing is 3/8" x 1" aluminum.

Utility requirements for this equipment may vary. Always consult the serving utility for their requirements before ordering or installing equipment in this catalog.







U2854-X-HSP  
(Shown with circuit breakers—  
order as extra)



U2866-X-HSP

## VERTICAL

### 125 AMP/POSITION

# OF POS.	CATALOG NUMBER	MAIN BUS RATING	LINE CONNECTOR SIZE
2	U2852-X-HSP	200 AMP	* $\frac{3}{8}$ "-16 STUD
3	U2853-X-HSP	200 AMP	* $\frac{3}{8}$ "-16 STUD

### 200 AMP/POSITION

# OF POS.	CATALOG NUMBER	MAIN BUS RATING	LINE CONNECTOR SIZE
2	U2862-X-HSP	250 AMP	* $\frac{3}{8}$ "-16 STUD
3	U2863-X-HSP	300 AMP	* $\frac{3}{8}$ "-16 STUD

## RECTANGULAR

### 125 AMP/POSITION

# OF POS.	CATALOG NUMBER	MAIN BUS RATING	LINE CONNECTOR SIZE
4	U2854-X-HSP	400 AMP	* $\frac{3}{8}$ "-16 STUD
5	U2855-X-HSP	400 AMP	* $\frac{3}{8}$ "-16 STUD
6	U2856-X-HSP	400 AMP	* $\frac{3}{8}$ "-16 STUD

### 200 AMP/POSITION

# OF POS.	CATALOG NUMBER	MAIN BUS RATING	LINE CONNECTOR SIZE
4	U2864-X-HSP	400 AMP	* $\frac{3}{8}$ "-16 STUD
5	U2865-X-HSP	600 AMP	* $\frac{3}{8}$ "-16 STUD
6	U2866-X-HSP	600 AMP	* $\frac{3}{8}$ "-16 STUD

## PLUG-IN BREAKER COMPATIBILITY CHART

### U2852-U2856

AMPS	CUTLER HAMMER	SIEMENS	SIEMENS/MURRAY	G.E.	SQUARE D
≤ 125	Quicklag P / BR	QP	MP	QLine	Homeline

### U2862-U2866

AMPS	CUTLER HAMMER	SIEMENS	SIEMENS/MURRAY	G.E.	SQUARE D
125-200	BR, BJ	QN	MD	QLine	—
≤ 125	Quicklag P, BR, HQP	QP	MP	QLine	Homeline

## CONNECTOR KITS \*

SIZE	SUFFIX	KIT #	COMPATIBLE WITH	WIRE RANGE
SINGLE	-K1	K1539	U2852-56, U2862-66	#6-350 kcmil
	-K3	K1540	U2854-56, U2864-66	#4-600 kcmil
TWIN	-K2	K1350	U2854-56, U2863-66	#6-350 kcmil
	-K4	K1541	U2864-66	#2-600 kcmil

**\*CONNECTORS:** For line wire connector kits, order separately. Order 1 kit per bank.

**FIFTH TERMINALS:** For field mounted fifth terminal order catalog number **K2381**. Order one per meter position.

**BREAKERS:** Units have provision for one double pole main per meter position. Breakers not included. Order as extra.

Utility requirements for this equipment may vary. Always consult the serving utility for their requirements before ordering or installing equipment in this catalog.



U4374-Xt-5T9

### 200 AMP/POSITION

# OF POS.	CATALOG NUMBER	MAIN BUS RATING	LINE CONNECTOR SIZE
2	U4372-Xt-5T9	320 AMP	3/8"-16 STUD
3	U4373-Xt-5T9	480 AMP	3/8"-16 STUD
4	U4374-Xt-5T9	640 AMP	3/8"-16 STUD
5	U4375-Xt-5T9	640 AMP	3/8"-16 STUD
6	U4376-Xt-5T9	640 AMP	3/8"-16 STUD

### PLUG-IN BREAKER COMPATIBILITY CHART

AMPS	CUTLER HAMMER	SIEMENS	SIEMENS/MURRAY	G.E.	SQUARE D
125-200	BR, BJ	QN	MD	QLine	—
≤ 125	Quicklag P, BR, HQP	QP	MP	QLine	Homeline

### LINE SIDE CONNECTOR KITS \*

SIZE	SUFFIX	KIT #	COMPATIBLE WITH	WIRE RANGE
SINGLE	-K1	K1539	U4372-76	#5-350 kcmil
	-K3	K1540	U4374-76	#4-600 kcmil
TWIN	-K2	K1350	U4373-76	#6-350 kcmil
	-K4	K1541	U4374-76	#2-600 kcmil

**\*CONNECTORS:** For line side connector kits, order separately.

**BREAKERS:** Units have provision for one double pole main per meter position. Breakers not included. Order as extra.

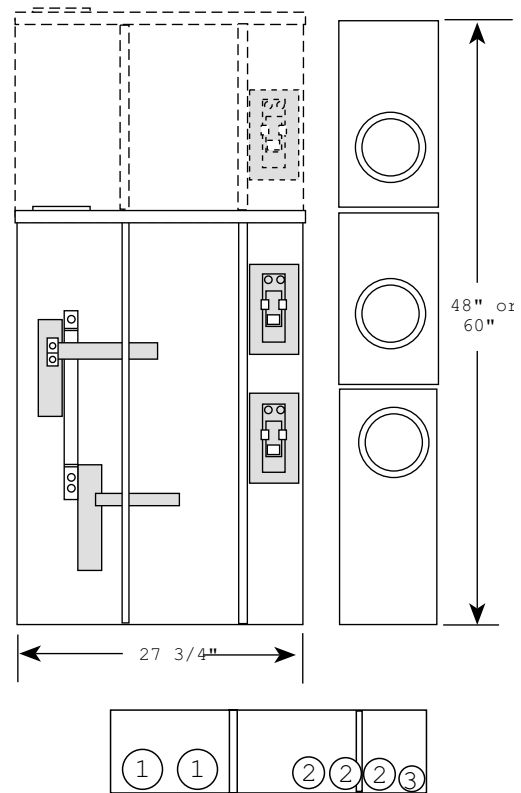
**BYPASS:** Lever supplies clamping action on meter spades and also operates bypass device.

**FIFTH TERMINAL:** Factory installed in 9 o'clock position.

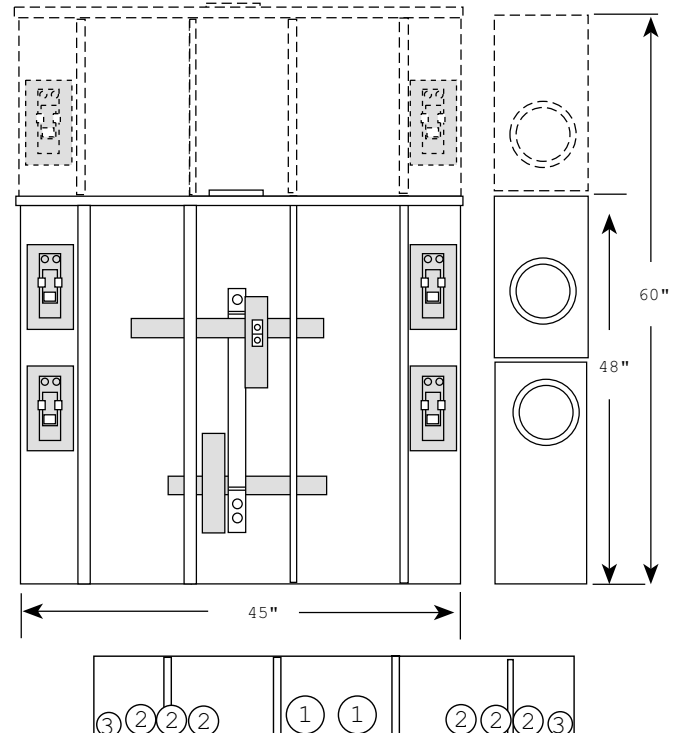
*Utility requirements for this equipment may vary. Always consult the serving utility for their requirements before ordering or installing equipment in this catalog.*



200 AMP/POS. (2-3 POSITION)

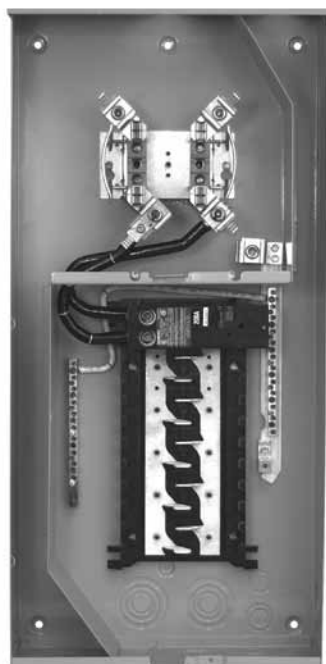


200 AMP/POS.(4,5 &amp; 6 POSITION)

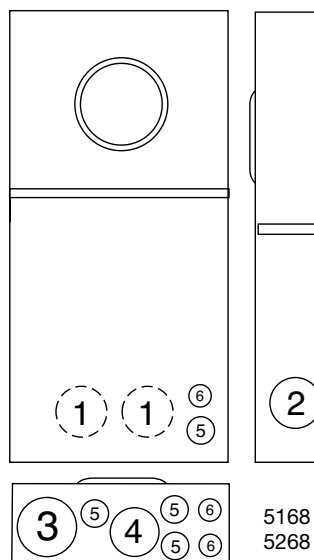


K.O.	DIMENSIONS
1	2, 2 1/2, 3" CONCENTRIC K.O.
2	1, 1 1/4, 1 1/2, 2" CONCENTRIC K.O.
3	1/4, 1/2" CONCENTRIC K.O.

Utility requirements for this equipment may vary. Always consult the serving utility for their requirements before ordering or installing equipment in this catalog.



U5268-XTL-200


5168  
5268

#### 4 TERMINAL – METER MAIN – OVERHEAD/UNDERGROUND – 22K AIC – 1Ø3W

AMPS	# OF CIRCUITS	CATALOG NUMBER	HUB	CONNECTORS CU/AL		BYPASS	DIMENSIONS			CONCENTRIC KO'S					
				LINE	LOAD		D"	W"	H"	1	2	3	4	5	6
100	8	U5168-XTL-100-KK	C.P.	#6-350	#1/0-300 Breaker*	HORN	4½	14⅞	32	2	2	3	2½	1½, ¾ 1	1½, ¾
150	8	U5168-XTL-150-KK	C.P.	#6-350	#1/0-300 Breaker*	HORN	4½	14⅞	32	2	2	3	2½	1½, ¾ 1	1½, ¾
200	8	U5168-XTL-200-KK	C.P.	#6-350	#1/0-300 Breaker*	HORN	4½	14⅞	32	2	2	3	2½	1½, ¾ 1	1½, ¾
150	20	U5268-XTL-150-KK	C.P.	#6-350	Breaker	HORN	4½	14⅞	32	2	2	3	2½	1½, ¾ 1	1½, ¾
200	20	U5268-XTL-200-KK	C.P.	#6-350	Breaker	HORN	4½	14⅞	32	2	2	3	2½	1½, ¾ 1	1½, ¾

**HUB:** Supplied with (2) closing plates packed inside. Order hubs as a separate item. See accessory page for hub options.

**INTERIOR:** **U5168** units have 8 circuit interior; **U5268** units have 20 circuit interior.

**FIFTH TERMINAL:** Order **K5T** and field install for 208Y/120 network systems. Installs in the 9 o'clock position only.

**BREAKERS:** Rated 22K AIC with Milbank **QNR2200H** main installed.

**INTERLOCK KIT:** For generator auxiliary circuit breaker interlock, order **K5815** for large **QN** with small frame **Q**; order **K5820** for large frame **QN** with large frame **QN**; order **K5830** for small frame **Q** with small frame **Q**.

**\*SUB-FEED LUGS:** #6-350 kcmil sub-feed lugs provided on 8 circuit interior. Not available on 20 circuit interior.

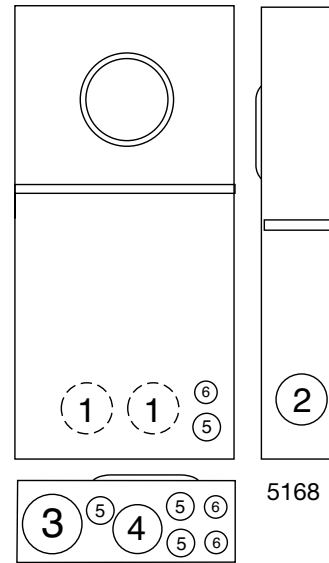
#### MAIN CIRCUIT BREAKER CHART

Amperage	150A - 22K	200A - 22K
Catalog No.	QN2150RH	QN2200RH

Utility requirements for this equipment may vary. Always consult the serving utility for their requirements before ordering or installing equipment in this catalog.



U5168-XTL-200



**150 / 200 AMP—5 TERMINAL—METER MAIN—22K AIC—120/240 VOLT—1Ø3W—RINGLESS / RING TYPE  
OVERHEAD / UNDERGROUND—8 CIRCUIT INTERIOR**

AMP	CIRCUITS	CATALOG NUMBER	HUB	CONNECTORS CU/AL LINE	BYPASS	DIMENSIONS			CONCENTRIC KO'S					
						D"	W"	H"	1	2	3	4	5	6
150	8	U5168-XTL-150-KK-5T	C.P.	#6-350	HORN	4½	14⅞	32	2	2	3	2½	1½, ¾ 1	1½, ¾
200	8	U5168-XTL-200-KK-5T	C.P.	#6-350	HORN	4½	14⅞	32	2	2	3	2½	1½, ¾ 1	1½, ¾

**HUB:** Supplied with (2) closing plates packed inside. Order hubs as a separate item. See accessory page for hub options.

**INTERIOR:** U5168 units have 8-circuit interior; U5268 units have 20-circuit interior.

**FIFTH TERMINAL:** Order K5T and field install for 208Y/120 network systems. Installs in the 9 o'clock position only.

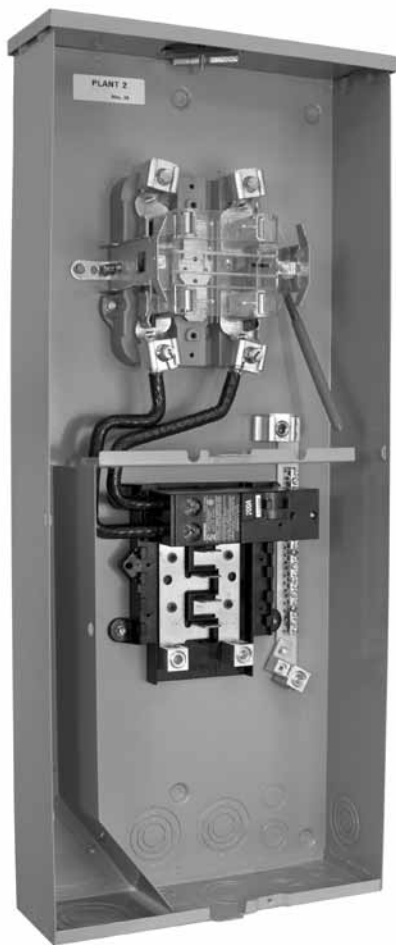
**BREAKERS:** Rated 22K AIC with Milbank QNR2200H main installed.

**INTERLOCK KIT:** For generator auxiliary circuit breaker interlock, order K5815 for large QN with small frame Q; order K5820 for large frame QN with large frame QN.

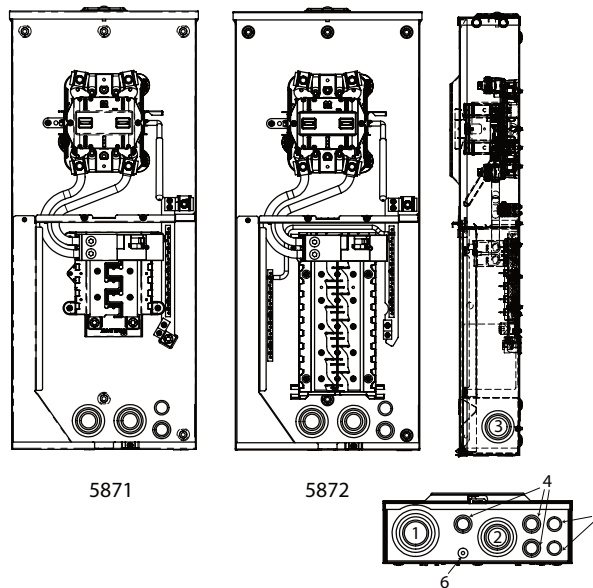
**SUB-FEED LUGS:** #6-350 kcmil sub-feed lugs provided on 8 and 10 circuit interior.

*Utility requirements for this equipment may vary. Always consult the serving utility for their requirements before ordering or installing equipment in this catalog.*

200 AMP—METER SOCKET / LOAD CENTER—4 TERMINAL—RINGLESS



U5871-XL-200



4 TERMINAL – RINGLESS

AMP	SERVICE	CATALOG NUMBER	HUB	CONNECTORS CU/AL		BYPASS	DIMENSIONS			CONCENTRIC KO'S					
				LINE	LOAD		D"	W"	H"	1	2	3	4	5	6
200	OH/UG	U5871-XL-200*	C.P.	#6-350	CB*	LEVER	4½	14⅞	33½	3	2½	2	1	½,¾	¼,½
200	OH/UG	U5872-XL-200**	C.P.	#6-350	CB	LEVER	4½	14⅞	33½	3	2½	2	1	½,¾	¼,½

RATING KAIC	CIRCUIT BREAKERS	
	MAIN	BRANCH
10	SIEMENS: QNR, QNRH	SIEMENS: QP, QPH CUTLER-HAMMER: BR, BRH, HPQ, QPHW, QPGF, QPHGF SQUARE D: HOMELINE G.E.: (50 AMP MAX) THQL, THHQL, THQL-GF, THHQL-GF
22	SIEMENS: QNRH	SIEMENS: QP, QPH

**BREAKERS:** Rated 22K AIC with Milbank **QNR2200H** main installed.

**BRANCH BREAKERS:** (12) single-pole branch circuits available.

**FIFTH TERMINAL:** Order **K5T** and field install for 208Y/120 network systems. Installs in the 9 o'clock position only.

**INTERLOCK KIT:** For generator auxiliary circuit breaker interlock, order **K5815** for large **QN** with small frame **Q**; order **K5820** for large frame **QN** with large frame **QN**.

\* 8 circuit load center with sub-feed lugs.

\*\* 20 circuit load center

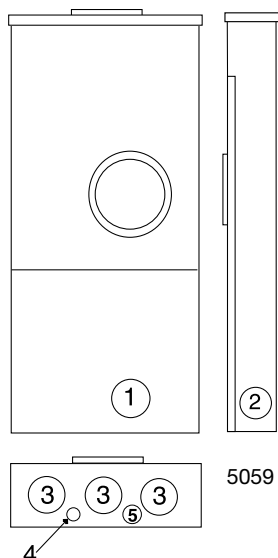
Utility requirements for this equipment may vary. Always consult the serving utility for their requirements before ordering or installing equipment in this catalog.



### 320 AMP CONTINUOUS 400 AMP MAX



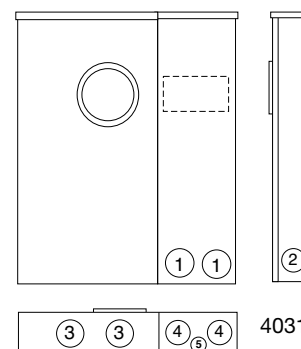
U5059-X-2/200-K3L



5059



U4031-O-2/200



4031

### 320 AMP METER MAIN WITH BREAKERS – SIDE WIREWAY – 1Ø3W – RINGLESS – 120/240 VAC

SERVICE	CATALOG NUMBER	HUB	CONNECTORS CU/AL		FIFTH TERM KITS	BYPASS	DIMENSIONS			CONCENTRIC KO'S				
			LINE	LOAD			D"	W"	H"	1	2	3	4	5
OH/UG	U5059-X-2/200-K3L*	C.P.	#4-600	1/0-300	K3866	LEVER	4 <sup>7</sup> / <sub>8</sub>	15	42	3	3	3	1/4	1/4, 1/2
OH/UG	U5059-X-K3L**	C.P.	#4-600	—	K3865	LEVER	4 <sup>7</sup> / <sub>8</sub>	15	42	3	3	3	1/4	1/4, 1/2
UG	U4031-O-2/200*	BLANK	3/8" x 16 STUDS	1/0-300	K3866	LEVER	5 <sup>3</sup> / <sub>4</sub>	25	30	3	3	3	3	1/4, 1/2

**LEVER BYPASS:** Lever supplies clamping action and operates bypass device.

**CONNECTORS:** **U4031** socket is supplied with 3/8" - 16 hex head nuts with Belleville washers. For connector lug kits, order as extra from chart on accessory page. Lug kit required for line side only.

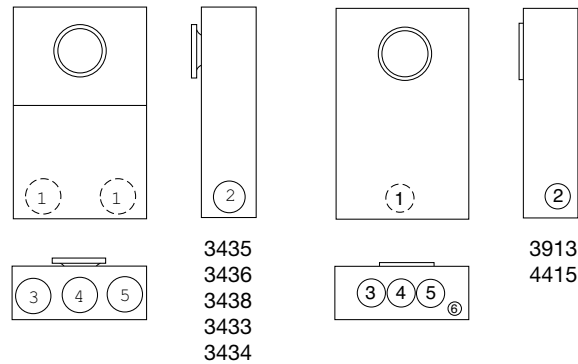
**\*BREAKERS:** Supplied with (2) bolt-in Milbank **UQFBH-200** breakers. Rated at 22K AIC.

**\*\*Requires 2 UQFPH-XXX breakers — sold separately.**

*Utility requirements for this equipment may vary. Always consult the serving utility for their requirements before ordering or installing equipment in this catalog.*



UC3438-XL-TS080025  
(with test switch factory installed)



### RING TYPE — WITH PROVISIONS FOR TEST SWITCH — EUSERC COMPLIANT — TWO PIECE FRONT

# OF TERMS	SERVICE	CATALOG NUMBER	HUB	CONNECTORS	BYPASS	DIMENSIONS			CONCENTRIC KO'S					
						D"	W"	H"	1	2	3	4	5	6
5	OH/UG	UC3435-XL	C.P.	#14 - #2	NONE	5 $\frac{1}{8}$	12	20	2	2	2	2	2	—
6	OH/UG	UC3436-XL	C.P.	#14 - #2	NONE	5 $\frac{1}{8}$	12	20	2	2	2	2	2	—
8	OH/UG	UC3438-XL	C.P.	#14 - #2	NONE	5 $\frac{1}{8}$	12	20	2	2	2	2	2	—
13	OH/UG	UC3433-XL	C.P.	#14 - #2	NONE	5 $\frac{1}{8}$	12	20	2	2	2	2	2	—
15	OH/UG	UC3434-XL	C.P.	#14 - #2	NONE	5 $\frac{1}{8}$	12	20	2	2	2	2	2	—

### RINGLESS — PREWIRED TEST SWITCH WITH COVER

# OF TERMS	SERVICE	CATALOG NUMBER	HUB	CONNECTORS	BYPASS	DIMENSIONS			CONCENTRIC KO'S					
						D"	W"	H"	1	2	3	4	5	6
13	OH/UG	UC3913-RL-WC-11 <sup>1</sup>	H.O.	#14 - #2	TEST SWITCH	5 $\frac{1}{8}$	12	20	1 $\frac{1}{4}$	1 $\frac{1}{4}$	1 $\frac{1}{4}$	1 $\frac{1}{4}$	1 $\frac{1}{4}$	1 $\frac{1}{4}$
13	OH/UG	UC4415-RL-WC-21 <sup>1</sup>	H.O.	#14 - #2	TEST SWITCH	5 $\frac{1}{8}$	12	20	1 $\frac{1}{4}$	1 $\frac{1}{4}$	1 $\frac{1}{4}$	1 $\frac{1}{4}$	1 $\frac{1}{4}$	1 $\frac{1}{4}$

**\*SEALING RINGS:** Ring type units are supplied with one **MR-4**, screw type, sealing ring.

**PREWIRING:** If factory prewiring is required consult factory before ordering. Please include meter socket catalog number, test switch number, meter form number, and a copy of your wiring diagram. See page 42.

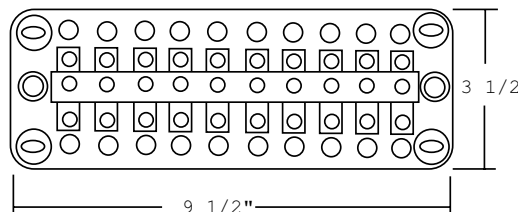
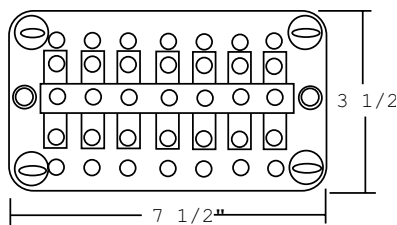
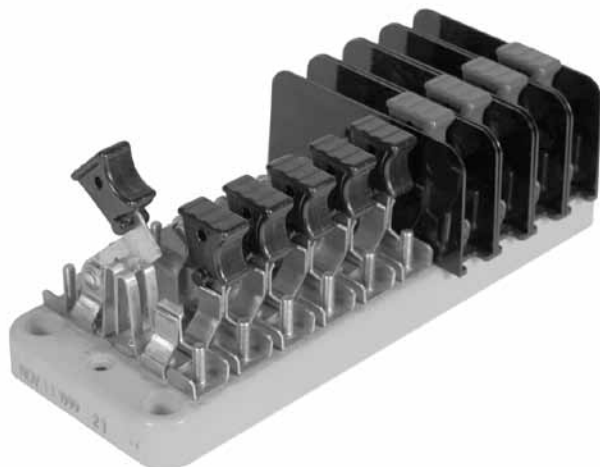
**TEST SWITCH COVERS:** Units on this page can be used with clear lexan cover — order K3388 for field-installable cover.

**CONNECTORS:** Units are supplied with sleeve type connectors (#14-#2)

**HUBS:** For proper hub selection see the hub suffix chart in accessory section.

<sup>1</sup> Provided with clear lexan test switch cover and factory installed / pre-wired test switch.

Utility requirements for this equipment may vary. Always consult the serving utility for their requirements before ordering or installing equipment in this catalog.



KEY	
P	Potential Switch
C+	Line side current switch with short circuit assembly
C	Load side current switch with test jack assembly
N	Neutral bar ( no switch )
Pn	Neutral potential switch
X	Unused position on base
	Insulating barrier, isolates both sides of switch

CATALOG NUMBER	4-POLE						
TS04-0101	X	P		X	C+	C	X
TS04-0104	X	C+	C	X		Pn	X

CATALOG NUMBER	7-POLE						
TS07-0105		P		C+	C	C+	C

### CUSTOM POLE ARRANGEMENTS:

The key may be used to diagram your own pole arrangement. Be sure to specify base size and whether all C+ line side, current switch / shunt circuit assemblies are to be bussed together. The catalog numbers shown above are connected in line-load pairs; therefore, if bussed is required, different catalog numbers will apply.

CATALOG NUMBER	7-POLE ON A 10 POLE BASE									
TS07-0049		X		X		X	C+	C	C	C+
TS07-0106	X		C+	C		C+	C		X	X

### STANDARD COVER



K3388

CATALOG NUMBER	10-POLE									
TS10-0109	P		P		C+	C	C+	C	C+	C
TS10-0110		C+	C		C+	C		C+	C	
TS10-0111	P		P		C	C+	C	C+	C	C+
TS10-0112	C+	C	C+	C	C+	C		P		Pn
TS10-0016				PN	C	C+	C	C+	C	C+

Utility requirements for this equipment may vary. Always consult the serving utility for their requirements before ordering or installing equipment in this catalog.

**TEST SWITCH BASE**

The base is molded from a high strength, fiberglass reinforced, thermoset polyester. This material is track-resistant, flame-retardant and has low water absorption qualities. Bases are available in two standard sizes following NEMA mounting classifications.

CUSTOMER NAME: \_\_\_\_\_

ADDRESS: \_\_\_\_\_

PHONE / FAX: \_\_\_\_\_ / \_\_\_\_\_

**HANDLE COLOR KEY**

<b>BK</b>	Black	<b>P</b>	Purple	<b>Y</b>	Yellow	<b>GN</b>	Green
<b>R</b>	Red	<b>BL</b>	Blue	<b>W</b>	White	<b>BKS</b>	BK/Stripe
<b>BR</b>	Brown	<b>GR</b>	Grey	<b>O</b>	Orange	<b>WS</b>	W/Stripe

**POLE POSITION CHART**

1	2	3	4	5	6	7	8	9	10

**SPECIAL FEATURES**

FEATURE	1	2	3	4	5	6	7	8	9	10
45° ANGLE STOPS										
GANGED HANDLES (C)										
BUSSING										
COLORED HANDLES										

ENGINEERING INFORMATION: \_\_\_\_\_

---



---




---



---

**KEY**

P	Potential Switch
C+	Line side current switch with short circuit assembly
C	Load side current switch with test jack assembly
N	Neutral bar ( no switch )
Pn	Neutral potential switch
X	Unused position on base
	Insulating barrier, isolates both sides of switch

**CUSTOM POLE ARRANGEMENTS:** The key may be used to diagram your own pole arrangement. Be sure to specify base size and whether all C+ line side, current switch / shunt circuit assemblies are to be bussed together. The catalog numbers shown above are connected in line-load pairs; therefore, if bussed is required, different catalog numbers will apply.

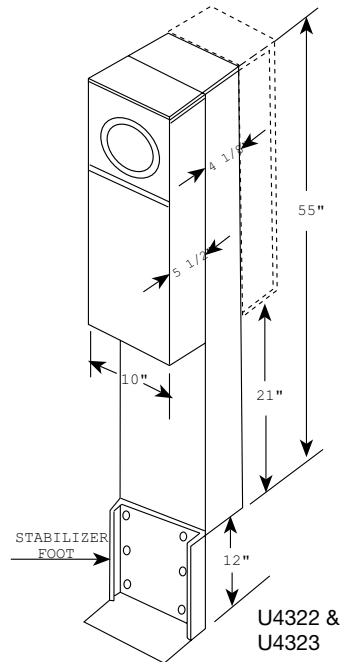
**NUMBER OF POLES**☐ 4☐ 7☐ 10☐ OTHER \_\_\_\_\_**TEST SWITCH COVER\***☐ YES ☐ CLEAR ☐ BLACK☐ NO**BASE SIZE**☐ 7 POLE☐ 10 POLE

\*Test switch covers are only available for 10 pole bases.

*Utility requirements for this equipment may vary. Always consult the serving utility for their requirements before ordering or installing equipment in this catalog.*



U4322-O



U4323-O

### PLUG-IN BREAKER COMPATIBILITY CHART

AMPS	MILBANK	CUTLER-HAMMER (WESTINGHOUSE)	SIEMENS (ITE)	SIEMENS MURRAY/ CROUSEHINDS	G.E.	SQUARE D
125-200	Q, QN	HQP, BR, BJ	QN	MD	QLine	—
≤ 100	Q	Quicklag P, BR, HQP	QP	MP	QLine	Homeline

### 200 AMP — 4 TERMINAL — RINGLESS

CATALOG NUMBER	METER POSITIONS	BYPASS	MOUNTING TYPE	TWIN LINE CONNECTORS CU/AL	CIRCUIT PROV.	CONCENTRIC KO'S
U4322-O-(AMP)	SINGLE	LEVER	POST	#6 AWG-350	6	Provisions for Main with Branch or Parallel Breakers
U4323-O-(AMP)	DOUBLE	LEVER	POST	#6 AWG-350	6	

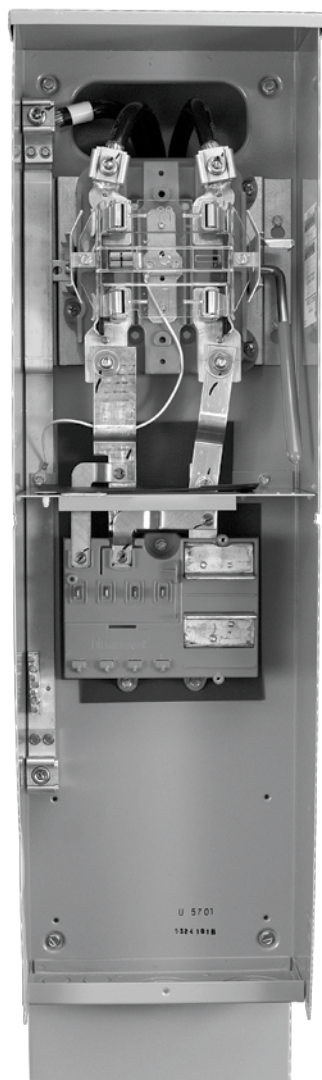
**LEVER BYPASS:** Lever provides clamping action on meter spades and also operates bypass device.

**APPLICATION:** The **U4322** & **U4323** pedestals are suitable for use as service equipment or mobile home service equipment. **K5081 / K3188** for direct burial application is included with unit. **K5151** for pad mount application must be ordered as extra.

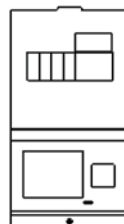
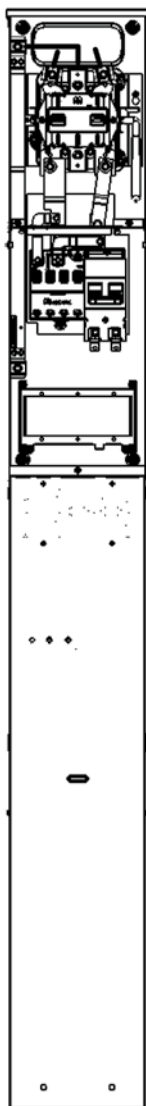
**BREAKERS:** These units are wired as parallel mains and have provisions for six circuits: six single-pole or three double-pole breakers. Quadplex style breakers may be used in accordance to the NEC. If main breaker is used, there are provisions for two 2-pole breakers or four 1-pole breakers in series.

**FIFTH TERMINAL:** For field installed fifth terminal order catalog number **K3865** (neutral wire not provided) or **K3866** (with neutral wire). Both may be installed in 6 o'clock or 9 o'clock position.

*Utility requirements for this equipment may vary. Always consult the serving utility for their requirements before ordering or installing equipment in this catalog.*



U5701-O-5T9

**SPECIFICATIONS:**

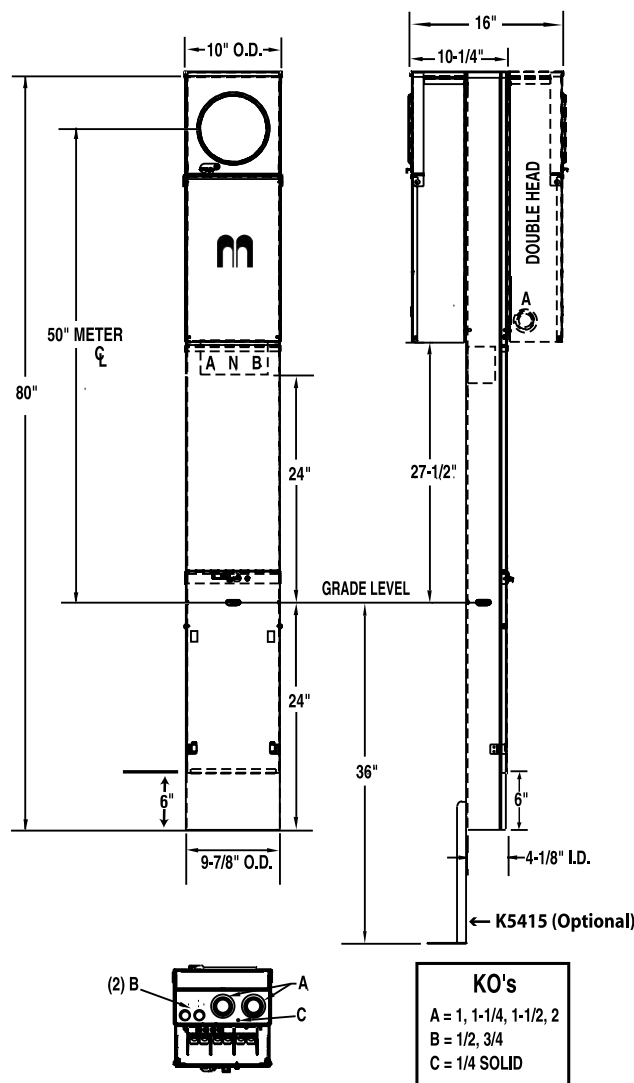
- UL Listed
- 200 amp maximum, 120/240 volt, single phase, three wire meter socket
- Ringless meter socket with lever bypass and stainless steel latch
- Short circuit withstand rating 22K AIC.
- Type 3R construction for durable outdoor use, one piece post – lockable and sealable
- Milbank grey polyester powder coat finish
- Wire terminations accept copper or aluminum conductors
- Line & Neutral: (2) #6-350 kcmil per phase
- Line Ground: (4) #14-1/0
- Load Neutral: (1) #6-350 kcmil
- Load Ground: (2) #14-1/0, (4) #14/6
- Milbank plug-in main circuit breaker. Available in 100, 125, 150 & 200 amp. Type **UQFP-M**.
- Four-circuit plated copper interior accepts (2) 2-pole or (4) 1-pole standard plug-in type circuit breakers up to a total of 125 amps maximum. Acceptable manufacturers: Cutler-Hammer, GE or Siemens
- Factory or field installable receptacle bridge and receptacle / circuit breaker available. See accessories.

*Utility requirements for this equipment may vary. Always consult the serving utility for their requirements before ordering or installing equipment in this catalog.*





**U5136-O-200S** with series wired  
main & **K5400-520GR** kit



**SPECIFICATIONS:**

- UL Listed
- 200 amp maximum, 120/240 volt, single phase, three wire meter socket
- Ringless meter socket with horn bypass and stainless steel latch
- Short circuit withstand rating 22K AIC.
- Type 3R construction for durable outdoor use, one piece post – lockable and sealable
- Milbank grey polyester powder coat finish
- Wire terminations accept copper or aluminum conductors
- Line & Neutral: (2) #6-350 kcmil per phase
- Line Ground: (4) #14-1/0
- Load (CB): 2/0 to 300 kcmil per pole
- Load Neutral: (1) #6-350 kcmil
- Load Ground: (2) #14-1/0, (4) #14/6
- Milbank plug-in main circuit breaker. Available in 100, 125, 150 & 200 amp. Type **UQFPH-M**.
- Four-circuit plated copper interior accepts (2) 2-pole or (4) 1-pole standard plug-in type circuit breakers up to a total of 125 amps maximum. Acceptable manufacturers: Cutler-Hammer, GE or Siemens
- Factory or field installable receptacle bridge and receptacle / circuit breaker available. See accessories.
- Also available in Ring Type.

**SINGLE PEDESTAL (Direct Burial)**

CATALOG NUMBER	MAIN BREAKER	MAIN CB	BRANCH	WEIGHT (lbs)
◆ <b>U5136-O-100S</b>	◆ UQFPH-M-100	100	4 Circuit	82
◆ <b>U5136-O-200S</b>	◆ UQFPH-M-200	200	4 Circuit	82
◆ <b>U5136-O (parallel wired)</b>	provision for UQFPH-M Series	—	4 Circuit	80
◆ <b>U5701-O-5T9</b>	UQFP-M-(AMP)	100	4 Circuit	89

**SINGLE PEDESTAL (Pad Mount)**

<b>U5138-O-200S</b>	UQFPH-M-200	200	4 Circuit	82
<b>U5138-O (parallel wired)</b>	provision for UQFPH-M Series	—	4 Circuit	80

**DOUBLE PEDESTAL (Direct Burial)**

◆ <b>U5137-O-100S</b>	(2) UQFPH-M-100	100	4 Circuit	115
◆ <b>U5137-O-200S</b>	(2) UQFPH-M-200	200	4 Circuit	115
◆ <b>U5137-O (parallel wired)</b>	provision for (2) UQFPH-M Series	—	4 Circuit	111
◆ <b>U5702-O-5T9</b>	UQFP-M-(AMP)	100	4 Circuit	94

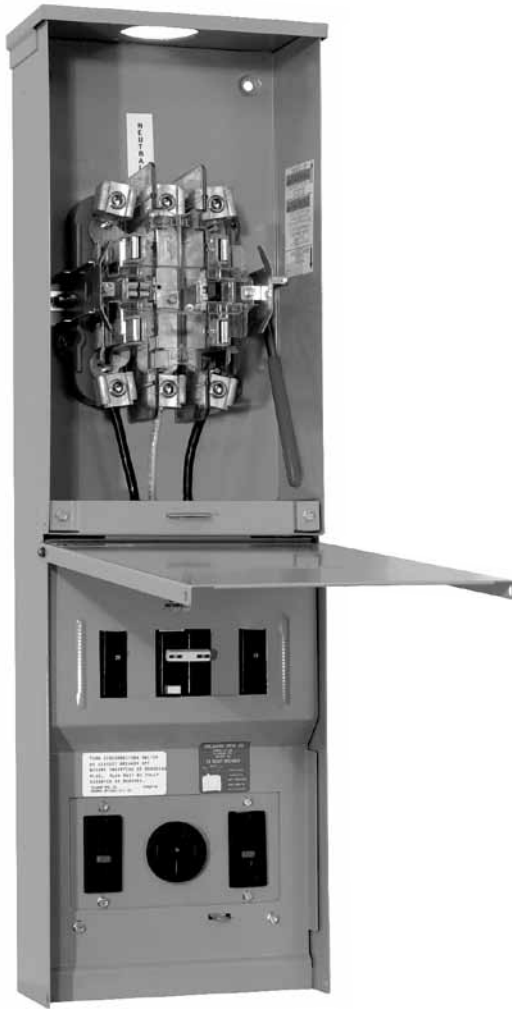
**RECEPTACLE / CIRCUIT BREAKER KITS AND ACCESSORIES (order separately)**

CATALOG NUMBER	DESCRIPTION
◆ <b>K5400-BRIDGE-2POS</b>	Self-grounded two position receptacle bridge with hardware
◆ <b>K5415</b>	Stabilizer Foot with hardware
◆ <b>K5035</b>	Pad Mount Kit with hardware for <b>U5242/43</b> pad mount pedestals required
◆ <b>K5T</b>	5th Terminal for 208y / 120 volt 3-wire service
◆ <b>K5193</b>	Bus kit to convert series-wired main breaker to parallel
◆ <b>K5194</b>	Wire kit to convert parallel-wired main breaker to series
◆ <b>K3450</b>	Telephone / CATV mounting bracket (mounts left or right)
◆ <b>K5039</b>	Penta bolt utility cover
◆ <b>Z708080-MO</b>	20A duplex GFI receptacle, NEMA type 520
◆ <b>701776-MO</b>	30A receptacle, NEMA type TT30R
◆ <b>Z708767-MO</b>	50A receptacle, NEMA Type 14-50R
◆ <b>Q120</b>	20A 1P circuit breaker
◆ <b>Q130</b>	30A 1P circuit breaker
◆ <b>Q250</b>	50A 2P circuit breaker
◆ <b>K5935-10GR</b>	Receptacle plate; 10, 10GR configurations
◆ <b>K5935-11GR</b>	Receptacle plate; 11GR, 11GB, 55GBGB configurations
◆ <b>K5935-36GR</b>	Receptacle plate; 36GR, 36GBGR configurations
◆ <b>K5935-41</b>	Receptacle plate; 41, 41GB, 41GBGB 55, 55GB, 55GBGR, 55GR configurations
◆ <b>K5935-54</b>	Receptacle plate; 54, 30 configurations
◆ <b>K5935-2/1450</b>	Receptacle plate; 2/1450 configuration
◆ <b>Z819294-SC</b>	U5136, U5240, U5701 dead front with opening for two receptacles - MH product
◆ <b>1148210</b>	U5136, U5240, U5701 dead front with opening for three receptacles

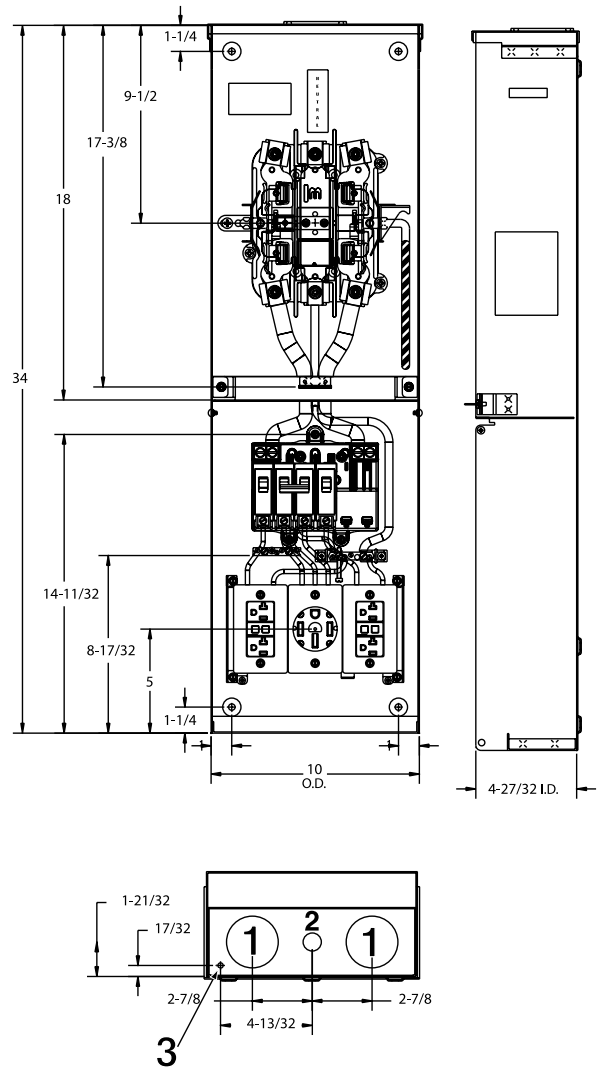
- Up to two receptacle / circuit breaker kits can be field-installed in each powerhead. Order mounting bridge and receptacle kits separately from above. For three receptacles or factory-installed kits, contact factory.
- Receptacle / circuit breaker kits include receptacle, circuit breaker, connected wire, cover plate and mounting screws. Other receptacle / circuit breaker kits available.
- **K5415** Stabilizer Foot sold separately. Recommended for double pedestals.
- Pad mount pedestals require **K5035** pad mount kit. Order separately.
- ◆ *Stock item – availability subject to prior sale. Non-stock items – minimum order quantity required.*

*Utility requirements for this equipment may vary. Always consult the serving utility for their requirements before ordering or installing equipment in this catalog.*

### TEMPORARY POWER OUTLET



U5091-RL-76GBGR



### 125 AMP – 5 TERMINAL – POWER OUTLET – RINGLESS – 120/240 VAC – 1Ø3W

TERMS	SERVICE	CATALOG NUMBER	HUB	CONNECTORS	BYPASS	DIMENSIONS			CONCENTRIC KO'S					
				CU/AL LINE		D"	W"	H"	1	2	3	4	5	6
5	OH	U5091-RL-76GBGR	H.O.	#6-350	LEVER	4 <sup>7</sup> / <sub>8</sub>	10	34	2	1/2	1/24	—	—	—

**BREAKERS:** U5091 is factory wired with two (2) 20 amp / 120V breakers and one (1) 50 amp / 120 - 240V GFCI breaker.

**RECEPTACLES:** U5091 includes two (2) factory installed 20 amp / 120V duplex GFCI receptacles and one (1) 50 amp / 120 - 240V receptacle.

**BY-PASS:** Lever supplies clamping action on meter spades and also operates bypass device.

**FIFTH TERMINAL:** Includes factory installed fifth terminal at 9 o'clock.

Utility requirements for this equipment may vary. Always consult the serving utility for their requirements before ordering or installing equipment in this catalog.

# Commercial Pedestals

*Attractive • Easy to install • Secure • Cost-effective*

## Un-Strut Your Stuff...



Milbank Commercial Pedestals are pad-mounted, weatherproof electrical enclosures consisting of a utility pull section with optional meter socket, and a customer section containing distribution and control equipment.

Milbank Commercial Pedestals are an attractive, secure, easy to install and cost-effective solution when underground remote site power distribution and control equipment is required, replacing unsightly and inefficient strut and backboard structures.



Strut and backboard design



Commercial Pedestal

## UL Listed as Industrial Control Equipment (File E113855)



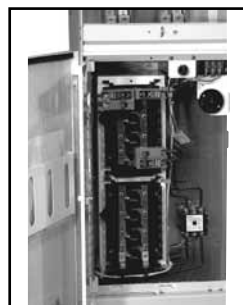
Ringless Socket



Ring-type Socket



Utility Lug Landing



Customer Interior

### STANDARD FEATURES –COMMERCIAL PEDESTALS

- Type 3R rainproof, vandal-resistant cabinet of polyurethane powder-coated steel (aluminum or stainless steel also available)
- UL listed as enclosed industrial control equipment (UL508)
- Isolated, lockable & sealable utility metering & lug landing sections
- Lockable customer section for distribution & control equipment with internal deadfront
- Print pocket inside customer section door contains wiring schematics and installation instructions
- Most load centers are UL listed for use with various manufacturers' circuit breakers
- All stainless steel external hardware (screws, bolts, hinges, handles, hasps and sealing screws)
- Meets EUSERC 308 and other utility standards.



*Utility requirements for this equipment may vary. Always consult the serving utility for their requirements before ordering or installing equipment in this catalog.*



## APPLICATIONS

These units are ideal for controlling and metering:

- Traffic signals
- Street lighting
- Irrigation / sprinkler systems
- Cell towers / telephone vaults
- Pump stations
- Temporary power for fairs, swap meets, outdoor markets, portable offices, holiday lights, etc.
- Outdoor lighting for athletic fields, tennis and basketball courts, parking lots, landscaping and subdivision entrances, etc.

## AVAILABLE FACTORY-INSTALLED OPTIONS

- Meter sockets – ring type or **ringless**, to 400 amp (unmetered pedestals also available)
- Main and branch breakers or T fuses
- Distribution – copper load centers & panel boards
- Clocks / timers / relays
- Photoelectric cells and controls
- Power receptacles – pin & sleeve, twist lock or straight blade
- Contactors – definite purpose, electrical or mechanically held, IEC and mercury types
- Surge protection & lightning arrestors
- Reserve inlet generator receptacle with interlocked circuit breakers
- Motor starters, relays
- Push button controls
- Thermostat controls, fans and heating strips
- Power blocks and terminal blocks
- Steel, aluminum and plywood back boards
- Transformers
- Interlock devices for circuit breakers
- Available in steel, aluminum (raw painted or anodized) or stainless steel construction with powder-coated finish available in 8 standard colors or special ordered RAL colors.
- Available for applications up to 400 amp, 120V, 208V, 240V, 277V, 480V – 1Ø or 3Ø.

## ACCESSORIES:



### K3865

Fifth terminal kit for use with ringless meter sockets



### CP-ABK5/8

Anchor bolt kit (includes four 5/8 - 13 x 18" anchor bolts)



### 105J

Fifth terminal kit for use with ring-type meter sockets



### CP-TC7D:

7-day time clock kit

### CP-TC24H:

24-hour time clock kit

### CP-TCWIRE:

Male four-pin connector and wiring harness for use with time clocks other than shown



### CP-PE-HOA-3POS

HOA switch – for field installation



### CP-16PDMNT-CALT

Pedestal mounting base for 16" pedestal

### CP-24PDMNT-CALT

Pedestal mounting base for 24" pedestal (includes mounting hardware)

Utility requirements for this equipment may vary. Always consult the serving utility for their requirements before ordering or installing equipment in this catalog.



## CONNECTOR KITS

**SINGLE**

For use with 3/8"-16 stud type units only

**TWIN**

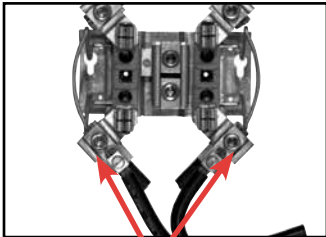
SUFFIX	CAT #	(3 per set) - 1Ø
K1	<b>K1539</b>	6-350 kcmil
K3	<b>K1540</b>	4-600 kcmil or (2) 1/0-250 kcmil
K3L	<b>K1540L</b>	4-600 kcmil or (2) 1/0-250 kcmil

SUFFIX	CAT #	(4 per set) - 3Ø
K5	<b>K3082</b>	6-350 kcmil
K7	<b>K3441</b>	4-600 kcmil or (2) 1/0-250 kcmil

SUFFIX	CAT #	(3 per set) - 1Ø
K2	<b>K1350</b>	6-350 kcmil
K2L	<b>K1350L</b>	4-600 kcmil Non-rotating
K4	<b>K1541</b>	4-600 kcmil

SUFFIX	CAT #	(4 per set) - 3Ø
K6	<b>K3442</b>	6-350 kcmil
K8	<b>K3083</b>	4-600 kcmil

## LOAD TAP CONNECTORS (3 per set)

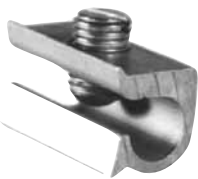
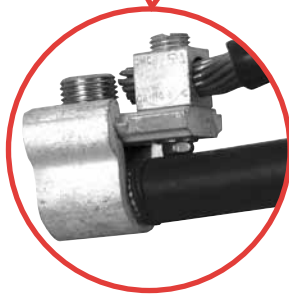


Replaces the load side slide-in nut assembly on Milbank 200 amp sockets. Allows for a 100 amp tap location in addition to the #6-350 kcmil load-side connector.

K5022 Includes Safety Barrier Extensions— for applications over 300 VAC in Heavy Duty block.

**K4977-INT**  
INTERNAL HEX

**K5022-INT**  
INTERNAL HEX

**TRIPLEX GROUND (K1190)**

(For factory installed triplex ground add suffix "-TG" to the catalog number.)

**DISCONNECT SLEEVE \***

**M5-144**

(\*NOT TO BE USED WITH LEVER BYPASS SOCKETS)

## INTERCHANGEABLE UNIT HUBS

**HUB ADAPTER PLATE**  
(Converts 4" opening to 2 1/2")  
S8324**HUB ADAPTER PLATE**

DESC.	SUFFIX	CAT. #
HUB ADAPTER	-RRL	<b>S8324</b>

**REMOVABLE HUB CLOSING PLATE**

DESC.	SUFFIX	CAT. #
SMALL (for -RL opening)	-XL	<b>A7551</b>
LARGE (for -R opening)	-X	<b>A9064</b>

**SMALL "RL" OPENING (STANDARD)**

SUFFIX	SIZE	MILBANK #
WL	1"	<b>A7514</b>
YL	1 1/4"	<b>A7515</b>
ZL	1 1/2"	<b>A7516</b>
DL	2"	<b>A7517</b>
EL	2 1/2"	<b>A7518</b>

**LARGE "RL" OPENING (HEAVY-DUTY)**

SUFFIX	SIZE	MILBANK #
F	3"	<b>A8110</b>
G	3 1/2"	<b>A8111</b>
H	4"	<b>A8112</b>

**TOP SUFFIX CHART**

O	Plain Top
RL	Small Hub Opening
R	Large Hub Opening
XL	Small Closing Plate
X	Large Closing Plate
RXL	Large hub opening adapted small closing plate
RRL	Large hub opening adapted to small hub opening
XT	Twin Large hub opening with closing plates

**HUB SUFFIX CHART**

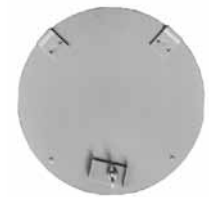
WL	1" For -RL Opening
YL	1 1/4" For -RL Opening
ZL	1 1/2" For -RL Opening
DL	2" For -RL Opening
EL	2 1/2" For -RL Opening
F	3" For -R Opening
G	3 1/2" For -R Opening
H	4" For -R Opening

**METER CLOSING PLATE**

(Ring type / Ringless)

**6003** (Gray Plastic)

**6116** (Clear Plastic)

**METAL CLOSING PLATE**

(For Ringless sockets): **CP-21**

**TOUCH-UP PAINT**

**A-GP**

Light Gray





## FIFTH TERMINALS

Consult factory for 5th terminal selection



**100-200 amp  
"PLUG-IN" FIFTH  
TERMINAL  
5T8K2**



**200 amp  
FIFTH TERMINAL  
K5T**  
(New style block with  
square hole)



**\*HEAVY DUTY  
FIFTH TERMINAL  
(K3865)**  
(K3866 without neutral wire)  
\*Both kits for units  
manufactured after  
August, 1992

## SEALING RINGS



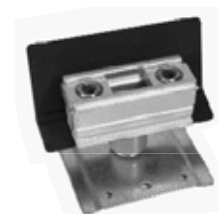
**SNAP ACTION  
MR-2**



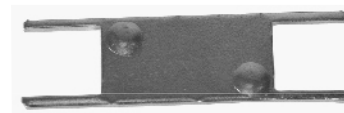
**SCREW TYPE  
(Stainless Steel)  
MR-4**



**BYPASS LINK  
(K8180)**  
(Bypass links sold in pairs)



**ISOLATED  
NEUTRAL KIT  
(K1047)**



**ANTI-INVERSION CLIP  
(K4802)**

## BREAKER COMPATIBILITY CHART\*

AMPS	MILBANK	CUTLER- HAMMER (WESTINGHOUSE)	SIEMENS (ITE)	SIEMENS MURRAY/ CROUSEHINDS	G.E.	SQUARE D
125-200	Q, QN	HQP, BR, BJ	Q, QN	MD	QLine	—
≤ 100	Q	Quicklag P, BR, HQP	QP	MP	QLine	Homeline

\*Contact your local Milbank rep for breaker compatibility.

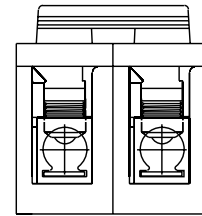
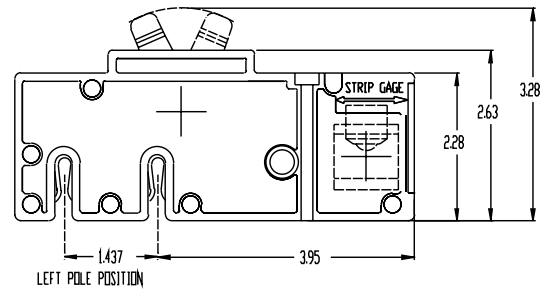
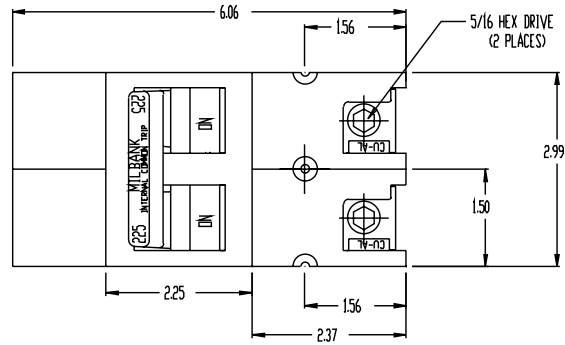
Utility requirements for this equipment may vary. Always consult the serving utility for their requirements before ordering or installing equipment in this catalog.



UQFP  
UQFPH



UQFP-M  
UQFPH-M



**200 AMP FRAME — PLUG-IN — 10,000 AIC & 22,000 AIC  
TWO-POLE — COMMON TRIP**

AMPS	10K AIC PLUG-IN	22K AIC PLUG-IN	10K AIC PLUG-IN	22K AIC PLUG-IN	WIRE RANGE	
					CU	AL
100	UQFP-100	UQFPH-100	UQFP-M-100	UQFPH-M-100	#3-#1	#1-1/0
125	UQFP-125	UQFPH-125	UQFP-M-125	UQFPH-M-125	#3-#1	#1-1/0
150	UQFP-150	UQFPH-150	UQFP-M-150	UQFPH-M-150	1/0-300	2/0-300
175	UQFP-175	UQFPH-175	UQFP-M-175	UQFPH-M-175	1/0-300	2/0-300
200	UQFP-200	UQFPH-200	UQFP-M-200	UQFPH-M-200	1/0-300	2/0-300

**UL LISTED:** For use with 60°C or 75°C wire.

**UQFP:** For parallel main circuit breaker applications

**UQFP-M:** For series main circuit breaker applications. Split load tab features allow for feed through capability.

**STANDARD PACKAGING:** 5 units per 16 lb. carton.

*Utility requirements for this equipment may vary. Always consult the serving utility for their requirements before ordering or installing equipment in this catalog.*



UQFB-X1



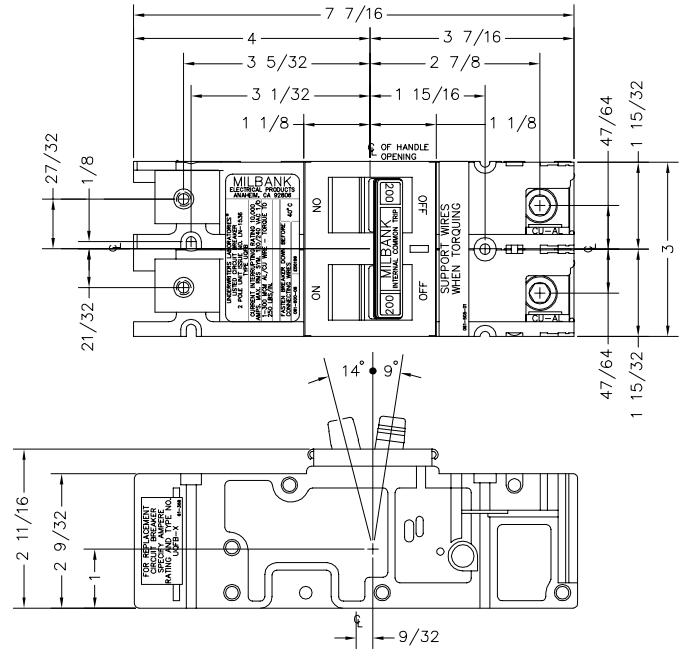
UQFB-X



UQFB



UQFB-X-MOD



### 200 AMP FRAME — BOLT-ON — 10K AIC & 22K AIC TWO-POLE — COMMON TRIP

	10K AIC BOLT-ON	22K AIC BOLT-ON	10K AIC BOLT-ON	WIRE RANGE	
				CU	AL
100	UQFB-100	UQFBH-100	UQFB-100-X1	#3-#1	#1-1/0
125	UQFB-125	UQFBH-125	UQFB-125-X1	#3-#1	#1-1/0
150	UQFB-150	UQFBH-150	UQFB-150-X1	1/0-300	2/0-300
175	UQFB-175	UQFBH-175	UQFB-175-X1	1/0-300	2/0-300
200	UQFB-200	UQFBH-200	UQFB-200-X1	1/0-300	2/0-300

**UL LISTED:** For use with 60°C or 75°C wire.

**UQFB:** (2) 1/0-300 kcmil lugs provided on load and line side (cable-in, cable-out.)

**UQFB3:** Three pole available. Consult factory.

**UQFB-X:** (2) 1/0-300 kcmil lugs provided on load side and (2) line bar bus connections on line side.

**UQFB-M:** For series main circuit breaker applications. Split load tab features allow for feed through capability.

**UQFB-X-MOD:** Replacement circuit breaker with line barriers removed.

**STANDARD PACKAGING:** 5 units per 16 lb. carton.

## MAXIMUM NUMBER OF CONDUCTORS IN CONDUIT\*

TYPE	CONDUCTOR SIZE AWG, MCM	CONDUIT TRADE SIZES (INCHES)									
		1/2	3/4	1	1 1/4	1 1/2	2	2 1/2	3	3 1/2	4
RHW & RHH (without outer covering) THW	14	6	10	16	29	40	65	93	143	192	
	12	4	8	13	24	32	53	76	117	157	
	10	4	6	11	19	26	43	61	95	127	163
	8	1	3	5	10	13	22	32	49	66	85
	6	1	2	3	7	10	16	23	36	48	62
TW THW FEPB (6 thru 2), RHW and RHH (without outer covering) RH, THHW	3	1	1	2	4	6	10	15	23	31	40
	1/0		1	1	2	3	5	8	12	16	21
	2/0		1	1	1	3	5	7	10	14	18
	3/0		1	1	1	2	4	6	9	12	15
	4/0		1	1	1	1	3	5	7	10	13
	250			1	1	1	2	4	6	8	10
	300			1	1	1	2	3	5	7	9
	350				1	1	1	3	4	6	8
	400				1	1	1	2	4	5	7
	500				1	1	1	1	3	4	6
	600					1	1	1	3	4	5
	700					1	1	1	2	3	4
	750					1	1	1	2	3	4

\*This table is for concentric stranded conductors only. For cables with compact conductors refer to N.E.C.

## SHORT CIRCUIT CURRENT RATING PER UL 414 TABLE 14.1

SHORT CIRCUIT CURRENT RATING:  
WHEN USED IN CONJUNCTION WITH THE FOLLOWING  
OVERCURRENT PROTECTIVE DEVICE,  
METER SOCKET IS RATED FOR USE ON A CIRCUIT  
CAPABLE OF DELIVERING NOT MORE THAN THE  
FOLLOWING RMS SYMMETRICAL AMPERES:

RMS SYM. AMPS, MAX.	MAX. OVERCURRENT PROTECTION, AMPS	VOLTS MAX.	RMS SYM. AMPS, MAX.	MAX. OVERCURRENT PROTECTION, AMPS	VOLTS MAX.
200,000	200 CLASS J OR T FUSE	600	42,000	200 CLASS RK1 FUSE	480
100,000	400 CLASS J OR T FUSE	600	25,000	100 CIRCUIT BREAKER	240
100,000	100 CLASS RK5 FUSE	600	22,000	1Ø 125 CIRCUIT BREAKER	240
50,000	600 CLASS T(300V) FUSE	300	18,000	200 CIRCUIT BREAKER	240
			14,000	ANY CIRCUIT BREAKER	600

## WATTHOUR METER NOT INCLUDED IN SHORT-CIRCUIT CURRENT RATING.

Note: Prior to purchase, verify amps, voltage and type of device used to protect circuit per this chart.

SEE CATALOG PAGES FOR APPLICABLE DEVICES.  
THIS CHART DOES NOT APPLY TO ALL PRODUCTS.

Overall ampere ratings of UL Listed Milbank multiple position meter sockets are based on **1993 N.E.C. Manual article 220-32** and **ANSI / UL-414** (except where restricted by line connector size.) These requirements provide for a diversity factor / demand factor being utilized in determining the overall (main bus / lug) rating of a gang socket. All Milbank UL Listed gang sockets meet or exceed these diversity factor/demand factor requirements. Standard overall ampacity ratings for UL Listed and non UL Listed gang sockets are as shown in the chart below. Ampere ratings of meter sockets are based on the meter socket being wired with 75° C insulated wire conductor, sized in accordance with **Table 310-16** of the **National Electric Code**.

## GANG SOCKET OVERALL AMPACITIES

NO. OF METER POSITIONS	100A / POS. AMPACITY	125A / POS. AMPACITY	150A / POS. AMPACITY	200A / POS. AMPACITY
2	200A	200A	200A	200A
3	200A	225A	225A	270A
4	200A	250A	270A	360A
5	225A	285A	338A	450A
6	270A	330A	396A	528A

All meter sockets are 600 volt rated unless otherwise noted. All meter socket ampacity ratings are continuous duty unless otherwise noted.

*CU		AL or Cu-Clad AL	
A	B	A	C
18	—	—	—
16	—	—	—
14	20†	—	—
12	25†	12	20†
10	35†	10	30†
8	50	8	40
6	65	6	50
4	85	4	65
3	100	3	75
2	115	2	90
1	130	1	100
1/0	150	1/0	120
2/0	175	2/0	135
3/0	200	3/0	155
4/0	230	4/0	180
250	255	250	205
300	285	300	230
350	310	350	250
400	335	400	270
500	380	500	310
600	420	600	340
700	460	700	375
750	475	750	385

\* Allowable ampacities of insulated  
Copper & Aluminum conductors  
(3W in conduit) 75°C (167°F)

† Unless otherwise permitted elsewhere in the Code, the overcurrent protection for conductor types marked with an obelisk (†) shall not exceed 15 amps for 14 AWG, 20 amps for 12 AWG, and 30 amps for 10 AWG copper; or 15 amps for 12 AWG and 25 amps for 10 AWG aluminum and copper-clad aluminum after any correction factors for ambient temperature and number of conductors have been applied.

A = Size: AWG/MCM

B = Ampere Rating for Insulation  
Types: FEPW, RH, RHW, THW,  
THWN, XHHW, USE, 2W.

C = Ampere Rating for Insulation  
Types: RH, RHW, THW, THWN,  
XHHW, USE

(Per NEC table 310-16)

## AMPACITY CORRECTION FACTORS

AMBIENT TEMP. C°	CORRECTION FACTOR	AMBIENT TEMP. F
21 - 25	1.05	70 - 77
26 - 30	1.00	79 - 86
31 - 35	.94	88 - 95
36 - 40	.88	97 - 104
41 - 45	.82	106 - 113
46 - 50	.75	115 - 122
51 - 55	.67	124 - 131
56 - 60	.58	133 - 140
61 - 65	.33	142 - 158
66 - 70	—	160 - 176

## IMPORTANT NOTE

In addition to national and local electrical codes, many utilities have specific requirements for metering equipment. Always consult the serving utility for their specifications and requirements prior to ordering or installing Milbank meter mounting equipment.

## BEFORE ENERGIZING

- A. Give equipment a thorough visual examination to determine that:
  - 1) No shipping or installation damage exists.
  - 2) Proper clearances have been maintained.
  - 3) All connections have been made.
  - 4) Equipment is clean and dry.
- B. Make a thorough examination to:
  - 1) Verify tightness of all bolted connections (see table below).
  - 2) Manually operate all circuit breakers, switches, relays, etc.
  - 3) Check rigidity of all mountings, bus bars and components.
  - 4) Use test equipment to check continuity of circuitry and integrity of insulation.
- C. All switches and circuit breakers should be in the "off" position.
- D. Verify that manual meter bypass (if applicable) is in non-bypass position.
- E. Install cover and/or close doors.
- F. If installation is not being energized at this time, follow "after-energizing" steps listed below. These steps will secure the installation in case of accidental energization.

## WHEN ENERGIZING

- A. Use caution and follow established safety procedures:
  - 1) Wear safety apparel.
  - 2) Use safety equipment.
  - 3) Take action to prevent injury to yourself and others in the event of failure of the installation.
  - 4) Take action to prevent/decrease damage to property in the event of failure of the installation.
  - 5) If you are unsure how to safely energize the installation, get someone who is knowledgeable to do it.

## AFTER ENERGIZING

- A. Secure the installation:
  - 1) To prevent accidental contact with energized parts, cover all openings with approved filler devices.
  - 2) To prevent unauthorized access, secure all covers and/or doors with approved security devices.
  - 3) Attach/post information to advise others of potential hazards associated with the installation.

### RECOMMENDED TORQUE FOR GENERAL APPLICATIONS\*

NOMINAL SIZE	JOINT DESCRIPTION		HEAD TYPE	TORQUE ( INCH LBS. )
	SCREW	NUT		
10	BRASS	Brass Nut or Extruded Hole	ALL	20-25 in. lbs.
10	STEEL	CU or AL Busbar $\leq 1/8"$	ALL	25-30 in. lbs
10	STEEL	Steel Nut or EH; CU or AL Busbar $> 1/8"$	ALL	30-35 in. lbs
12	STEEL	Aluminum Extruded Hole	ALL	30-35 in. lbs
12	STEEL	Steel Nut or Extruded Hole	ALL	40-50 in. lbs.
1/4	STEEL	Aluminum Extruded Hole	ALL	40-50 in. lbs.
1/4	STEEL	Steel Nut or EH; CU or AL Busbar	ALL	50-60 in. lbs.
5/16	STEEL	Aluminum Extruded Hole	HEX	60-70 in. lbs.
5/16	STEEL	Steel Nut or EH; CU or AL Busbar	HEX	100-150 in. lbs.
3/8	STEEL	Steel Nut	HEX	150-200 in. lbs.
1/2	STEEL	Steel Nut	HEX	200-250 in. lbs.

\*Interior labels typically indicate the required torque for wire connectors and studs, and should be referenced first.

**EH:** Extruded Hole

**CU:** Copper

**AL:** Aluminum

## MATERIALS

### STEEL QUALITY

The meter equipment listed in this catalog is made of galvanized steel (AISI\* G90) to afford the best possible weather proofing. \*American Iron and Steel Institute.

### STEEL SHEET

16 gauge, galvanized, sheet: 1 1/4 oz./ sq.ft. class zinc-coated.  
(AISI G90)

14 gauge, galvanized, sheet: 1 1/4 oz./ sq.ft. class zinc-coated.

### ALUMINUM EXTRUSION

Wire-Terminals: Alloy; 6061-T6, Tin-plated for CU/AL wire.

Bus Bar: Alloy; 6101-o & 6063-O

### ALUMINUM SHEET

3000 series aluminum sheet, H14, or 5052 series aluminum sheet, H32. Where applicable thicknesses range from .064 — .125

### COPPER SHEET & BUS

Electrolytic copper with tin plating in most applications.

### INSULATING MATERIALS

- In most units, support bases for current-carrying components are molded from fiberglass reinforced high-strength, track resistant, thermoset polyester molding compounds.
- Clear or black safety shields and polarity barriers are molded from high-strength, track resistant, polycarbonate molding compounds.
- Various sheet insulating materials, as appropriate for the application are utilized in the fabrication of flat, formed and punched component parts and barriers.

## FINISH

### PROCESS

Light gray “state of the art” electrostatically applied powder paint offers a durable, non-fading finish. For further information concerning the chemical analysis of the weather resistant finish, please contact the factory.

### METAL FASTENERS

Zinc-coated with a chromate dip.

## RATING

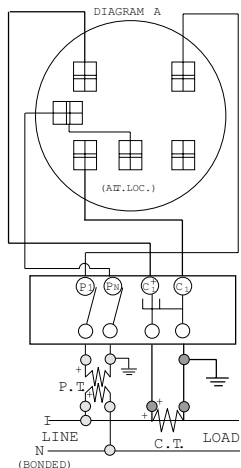
### NEMA RATING

Milbank meter sockets, CT cans and meter socket / breaker units have a type 3R rating.



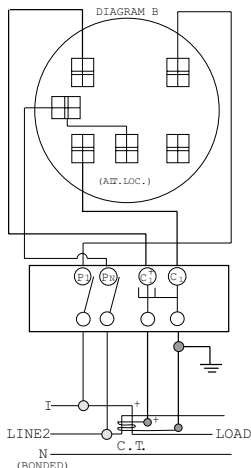
**DIAGRAM A**

1Ø3W with 1 P.T. & 1 C.T.  
Single Stator Meter(2W1Ø) - Form 3S  
5T Socket, Test Switch #TS04-0101



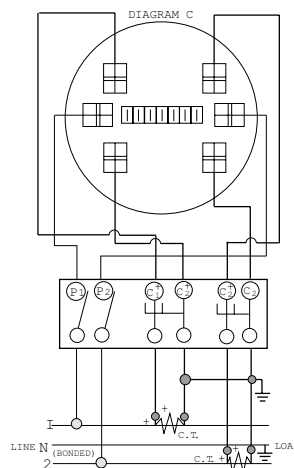
**DIAGRAM B**

1Ø3W with 1 C.T.  
Single Stator Meter(2W1Ø) - Form 3S  
5T Socket, Test Switch #TS04-0101



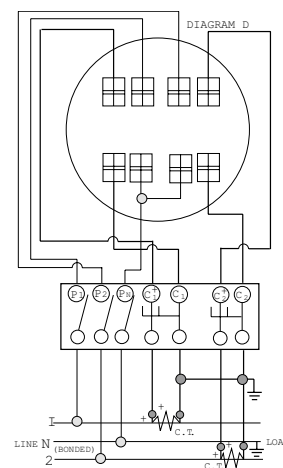
**DIAGRAM C**

1Ø3W with 2 C.T.'s  
Single Stator Meter(3W1Ø) - Form 4S  
6T Socket, Test Switch #TS07-0105



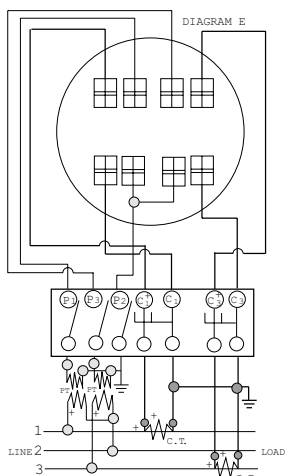
**DIAGRAM D**

1Ø3W or 3W Network with 2 C.T.'s  
2 Stator Meter - Form 5S  
8T Socket, Test Switch #TS07-0105



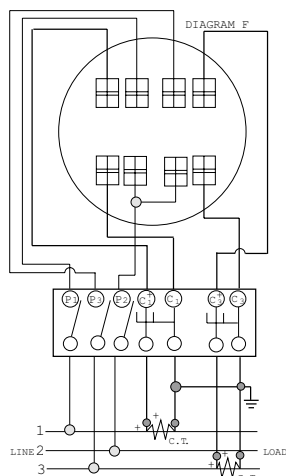
**DIAGRAM E**

3Ø3W "A" with 2 P.T.'s & 2 C.T.'s  
2 Stator Meter - Form 5S  
8T Socket, Test Switch #TS07-0105



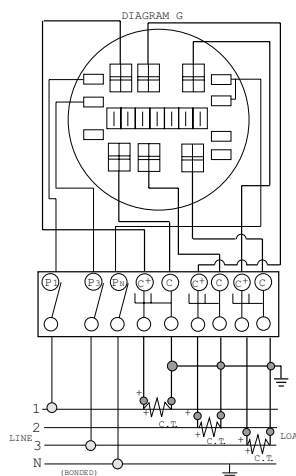
**DIAGRAM F**

3Ø3W "A" with 2 C.T.'s  
2 Stator Meter - Form 5S  
8T Socket, Test Switch #TS07-0105



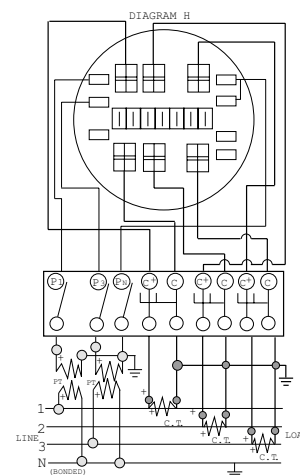
**DIAGRAM G**

3Ø4W "Y" with 3 C.T.'s  
2 1/2 Stator Meter - Form 6S  
13T Socket, Test Switch #TS10-0109



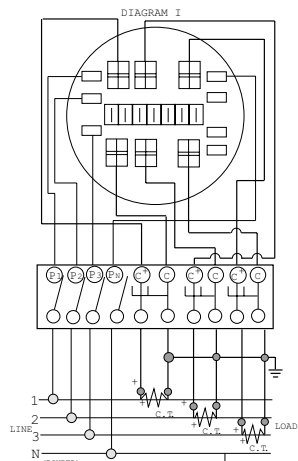
**DIAGRAM H**

3Ø4W "Y" with 2 P.T.'s & 3 C.T.'s  
2 1/2 Stator Meter - Form 6S  
13T Socket, Test Switch #TS10-0109



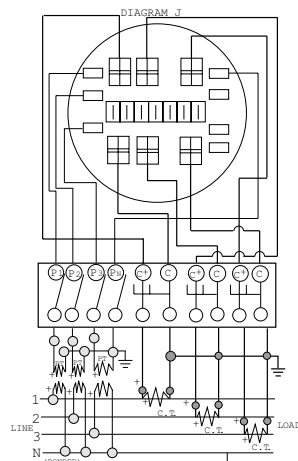
**DIAGRAM I**

3Ø4W "Y" or "A" with 3 C.T.'s  
"Y" 3 Stator Meter - Form 9S  
"A" 2 Stator Meter - Form 8S  
13T Socket, Test Switch #TS10-0109

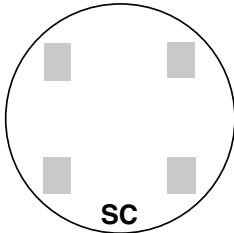


**DIAGRAM J**

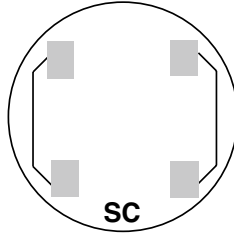
3Ø4W "Y" with 3 P.T.'s & 3 C.T.'s  
3 Stator Meter - Form 9S  
13T Socket, Test Switch #TS10-0109



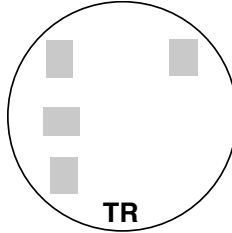
**PREWIRING:** If standard factory prewiring is required, refer to wiring diagrams on this page. Determine appropriate diagram and send a copy with order. If custom factory prewiring is required, specify on order. Be sure to include meter socket catalog number, test switch make and catalog number, meter form number and provide a copy of your wiring diagram.



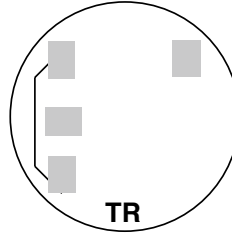
2 and 3-WIRE FORMS  
1S & 2S



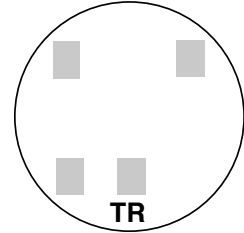
2 and 3-WIRE FORMS  
1S & 2S with BYPASS



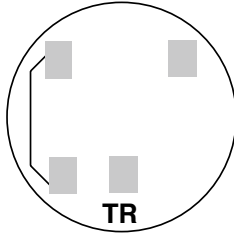
2-WIRE FORM 3S  
5th Term. 9 o'clock



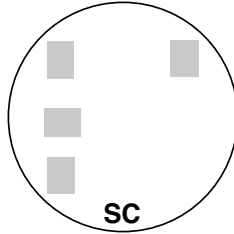
2-WIRE FORM 3S  
with BYPASS



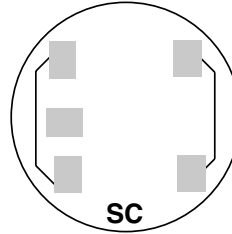
2-WIRE FORM 3S  
5th Term. 6 o'clock



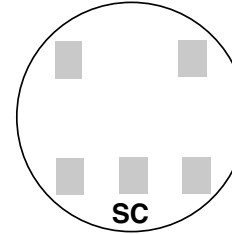
2-WIRE FORM 3S  
with BYPASS



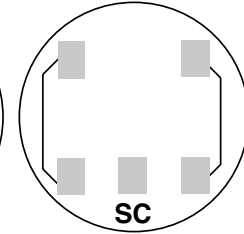
2 ELEMENT  
3-WIRE NETWORK  
FORM 12S 5th  
TERM. 9 o'clock



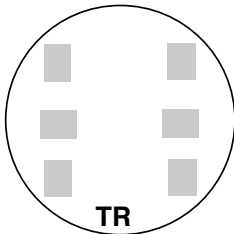
2 ELEMENT 3-WIRE  
NETWORK FORM 12S  
with BYPASS  
5th Term. 9 o'clock



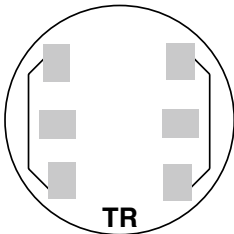
2 ELEMENT  
3-WIRE NETWORK  
FORM 12S 5th  
TERM. 6 o'clock



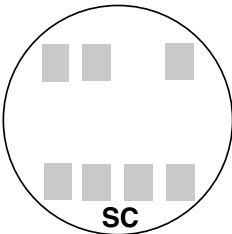
2 ELEMENT 3-WIRE  
NETWORK FORM 12S  
with BYPASS  
5th Term. 6 o'clock



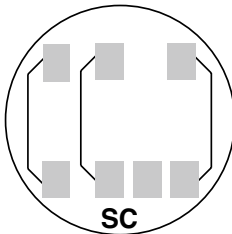
3-WIRE FORM 4S



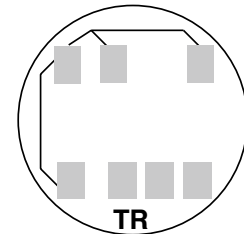
3-WIRE FORM 4S  
WITH BYPASS



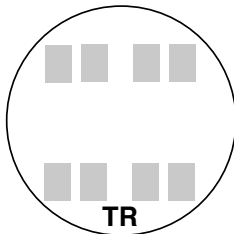
2 or 3 ELEMENT  
3Ø4W Y or Δ  
Y FORM 14S  
Δ FORM 15S



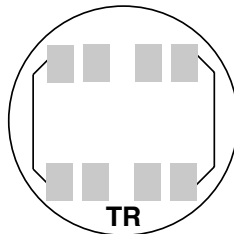
2 or 3 ELEMENT  
3Ø4W Y or Δ  
FORMS 14S & 15S  
with BYPASS



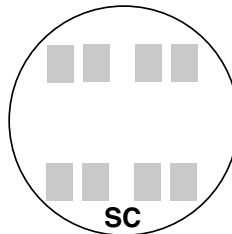
2 ELEMENT  
3Ø4W Y or Δ  
Y FORM 7S  
Δ FORM 24S  
with BYPASS



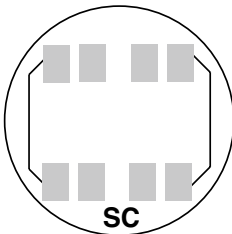
2 ELEMENT  
2Ø3W, 2Ø4W, 3Ø3W  
FORM 5S



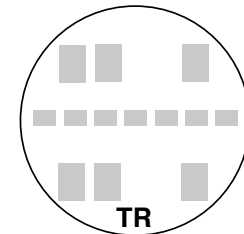
2 ELEMENT 2Ø3W,  
2Ø4W, 3Ø3W  
FORM 5S with  
BYPASS



2 ELEMENT  
2Ø3W, 2Ø4W, 3Ø3W  
FORM 13S

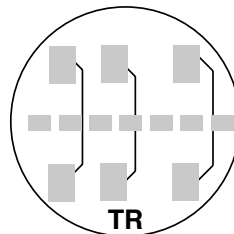


2 or 3 ELEMENT  
2Ø3W, 2Ø4W, 3Ø3W  
FORM 13S with  
BYPASS

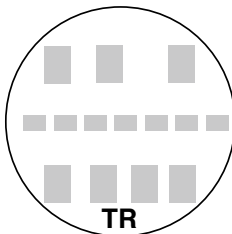


2 or 3 ELEMENT  
3Ø4W Y or Δ  
Y FORM 9S  
Δ FORM 8S

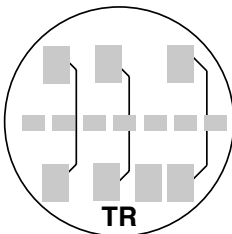
TR = TRANSFORMER RATED  
SC = SELF CONTAINED



2 or 3 ELEMENT  
3Ø4W Y or Δ  
FORMS 8S & 9S  
with BYPASS



2 ELEMENT  
3Ø4W Y  
FORM 6S



2 ELEMENT  
3Ø4W Y  
FORM 6S  
with BYPASS

Utility requirements for this equipment may vary. Always consult the serving utility for their requirements before ordering or installing equipment in this catalog.

## 2 POLE—3 WIRE—GROUNDING RECEPTACLES

STRAIGHT BLADE WIRING DEVICES						TWIST-LOCK WIRING DEVICES		
VOLTS	CODE	15 AMPS	20 AMPS	30 AMPS	50 AMPS	15 AMPS	20 AMPS	30 AMPS
125V	5							
		5-15R	5-20R	5-30R	5-50R	L5-15R	L5-20R	L5-30R
250V	6							
		6-15R	6-20R	6-30R	6-50R	L6-15R	L6-20R	L6-30R
277 VAC	7							
		7-15R	7-20R	7-30R	7-50R	L7-15R	L7-20R	L7-30R

## 3 POLE—3 WIRE—SPECIAL APPLICATIONS

STRAIGHT BLADE WIRING DEVICES					TWIST-LOCK	
VOLTS	CODE	20 AMPS	30 AMPS	50 AMPS	20 AMPS	30 AMPS
125V 250V	10					
		10-20R	10-30R	10-50R	L10-20R	L10-30R

## 3 POLE—4 WIRE—GROUNDING

STRAIGHT BLADE WIRING DEVICES						TWIST-LOCK	
VOLTS	CODE	15 AMPS	20 AMPS	30 AMPS	50 AMPS	20 AMPS	30 AMPS
125V 250V	14						
		14-15R	14-20R	14-30R	14-50R	L14-20R	L14-30R

## 2 POLE—3 WIRE—GROUNDING—NEMA TRAILER

STRAIGHT BLADE		
VOLTS	CODE	30 AMPS
125V	TT	
		TT-30R

Utility requirements for this equipment may vary. Always consult the serving utility for their requirements before ordering or installing equipment in this catalog.

UTILITY INDEX

SKU	Xcel Energy	City of Colorado Springs	Pacific Power	Aquila	Longmont City	SKU	Xcel Energy	City of Colorado Springs	Pacific Power	Aquila	Longmont City
MPRV-100-20GR-78		X				U4376-XT-5T9	X				
MPRV-100-78		X				U4468-XT	X				
MPRV-100-MB-78		X				U4551-RRL	X	X			
MPRV-503020GR-78		X				U4701-RRL	X	X		X	
MPRV-50-78		X				U4801-XL-5T9	X				
MPRV-BLANK-78		X				U5059-X-2/200-K3L	X	X			
MPRV-BLANK-78-R-5T		X				U5091-RL-76GBGR	X				
U1252-X-KK		X				U5136-O		X		X	
U1252-X-KK-K1		X				U5136-O-100S		X			
U1253-X-KK		X				U5136-O-200S		X			
U1253-X-KK-K1		X				U5137-O		X		X	
U1254-X-KK		X				U5137-O-100S		X			
U1254-X-KK-K3		X				U5137-O-200S		X			
U1255-X-KK		X				U5138-O		X			
U1255-X-KK-K3		X				U5138-O-200S		X			
U1256-X-KK		X				U5168-XTL-100-KK		X			
U1256-X-KK-K4		X				U5168-XTL-100-KK-5T		X			
U1527-XL						U5168-XTL-150-KK		X			
U1779-RRL-5T9-K3L-K2L	X	X				U5168-XTL-150-KK-5T		X			
U1797-O-K3L-K2L				X		U5168-XTL-200-KK		X			
U2594-X	X	X				U5268-XTL-150-KK		X			
U2852-X-KK		X				U5268-XTL-200-KK		X			
U2853-X-KK		X				U5701-O-5T9	X				
U2854-X-KK		X				U5702-O-5T9	X				
U2855-X-KK		X				U5871-XL-100-5T9	X				
U2856-X-KK		X				U5871-XL-150-5T9	X				
U2862-X-KK		X				U5871-XL-200-5T9	X				
U2863-X-KK		X				U5872-XL-150-5T9	X				
U2865-X-KK		X				U5872-XL-200-5T9	X				
U2866-X-KK		X				U7487-RL-TG-KK				X	
U3000-O-5T9-K3L-K2L	X	X				U8750-RL-KK		X			
U4015-O			X			U9101-RL-TG-KK		X			
U4031-O-2/200	X	X				U9551-RRL					X
U4322-O	X					U9701-R	X	X			
U4323-O	X					U9701-RXL	X				
U4372-XT-5T9	X					U9801-RXL	X				
U4373-XT-5T9	X					UC3913-RL-WC-11		X			
U4374-XT-5T9	X					UC4415-RL-WC-21		X			
U4375-XT-5T9	X										

SKU	Page #	SKU	Page #	SKU	Page #	SKU	Page #
6003.....	31	K5400-520GR.....	27	U3802 .....	4	UC3433-XL.....	21
6116.....	31	K5400-BRIDGE-1POS.....	27	U3822-20GWR .....	5	UC3434-XL.....	21
105J.....	30	K5400-BRIDGE-2POS.....	27	U3832 .....	4	UC3435-XL.....	21
5T8K2 .....	32	K5400-TT30.....	27	U3860 .....	4	UC3436-XL.....	21
A7514 .....	31	K5415 .....	27	U4015-O.....	7	UC3438-XL.....	21
A7515 .....	31	K5T .....	27,32	U4031-O-2/200 .....	20	UC3913-RL-WC-11.....	21
A7516 .....	31	K8180 .....	32	U4322-O.....	24	UC4415-RL-WC-21.....	21
A7517 .....	31	M5-144.....	31	U4323-O.....	24	UQFB-100 .....	34
A7518 .....	31	MCP .....	31	U4372-XT-5T9.....	15	UQFB-125 .....	34
A7551 .....	31	MR-2.....	32	U4373-XT-5T9.....	15	UQFB-150 .....	34
A8110 .....	31	MR2-SS.....	32	U4374-XT-5T9.....	15	UQFB-175 .....	34
A8111 .....	31	MR-4.....	32	U4375-XT-5T9.....	15	UQFB-200 .....	34
A8112 .....	31	S3824 .....	31	U4376-XT-5T9.....	15	UQFB-100-X1.....	34
A9064 .....	31	TS04-0101.....	22	U4551-RRL.....	10	UQFB-125-X1.....	34
A-GP.....	31	TS04-0104.....	22	U4701-RRL.....	10	UQFB-150-X1.....	34
CP-16PDMNT-CALT .....	30	TS07-0049.....	22	U4801-XL-5T9.....	10	UQFB-175-X1.....	34
CP-21 .....	31	TS07-0105.....	22	U4881-O-50GB .....	5	UQFB-200-X1.....	34
CP-24PDMNT-CALT .....	30	TS07-0106.....	22	U4881-O-60GB .....	5	UQFBH-100.....	34
CP-ABK5/8.....	30	TS10-0016.....	22	U5059-X-2/200-K3L.....	20	UQFBH-125.....	34
CP-PE-HOA-3POS.....	30	TS10-0109.....	22	U5059-X-5T9-K3L.....	20	UQFBH-150.....	34
CP-TC24H.....	30	TS10-0110.....	22	U5091-RL-76GBGR .....	28	UQFBH-175.....	34
CP-TC7D .....	30	TS10-0111.....	22	U5136-O.....	27	UQFBH-200.....	34
CP-TCWIRE.....	30	TS10-0112.....	22	U5136-O-100S .....	27	UQFP-100 .....	33
K1047 .....	32	U1252-X-K1.....	13	U5136-O-200S .....	26,27	UQFP-125 .....	33
K1190 .....	31	U1253-X-K3.....	13	U5137-O.....	27	UQFP-150 .....	33
K1350 .....	14,15,31	U1254-X-K3.....	13	U5137-O-100S .....	27	UQFP-175 .....	33
K1350L .....	31	U1255-X-K4.....	13	U5137-O-200S .....	27	UQFP-200 .....	33
K1539 .....	14,15,31	U1256-X-K4.....	13	U5138-O.....	27	UQFP-M-100.....	33
K1540 .....	14,15,31	U1527-XL .....	7	U5138-O-200S .....	27	UQFP-M-125.....	33
K1540L .....	31	U1779-RRL-5T9-K3L-K2L.....	12	U5168-XTL-100-KK.....	17	UQFP-M-150.....	33
K1541 .....	14,15,31	U1797-O-K3L-K2L.....	12	U5168-XTL-150-KK.....	17	UQFP-M-175.....	33
K3082 .....	31	U2448-X .....	11	U5168-XTL-150-KK-5T .....	18	UQFP-M-200.....	33
K3083 .....	31	U2569-O.....	7	U5168-XTL-200-KK.....	17	UQFPH-100.....	33
K3441 .....	31	U2594-X .....	11	U5168-XTL-200-KK-5T .....	18	UQFPH-125.....	33
K3442 .....	31	U2852-X-HSP.....	14	U5268-XTL-150-KK.....	18	UQFPH-150.....	33
K3450 .....	27	U2853-X-HSP.....	14	U5268-XTL-200-KK.....	17	UQFPH-175.....	33
K3865 .....	30,32	U2854-X-HSP.....	14	U5871-XL-200 .....	19	UQFPH-200.....	33
K4802 .....	32	U2855-X-HSP.....	14	U5872-XL-200 .....	19	UQFPH-M-100 .....	33
K4977-INT .....	31	U2856-X-HSP.....	14	U7487-RL-TG-KK.....	6	UQFPH-M-125 .....	33
K5022-INT .....	31	U2862-X-HSP.....	14	U8750-RL-KK.....	6	UQFPH-M-150 .....	33
K5035 .....	27	U2863-X-HSP.....	14	U9101-RL-TG-KK.....	6	UQFPH-M-175 .....	33
K5039 .....	27	U2864-X-HSP.....	14	U9551-RRL.....	9	UQFPH-M-200 .....	33
K5193 .....	27	U2865-X-HSP.....	14	U9701-RXL.....	9		
K5194 .....	27	U2866-X-HSP.....	14	U9801-RXL.....	9		
K5400-1450.....	27	U3000-O-5T9-K3L-K2L.....	12	U9865-RRL.....	8		

### Commercial Pedestals

- Attractive
- Easy to install
- Secure
- Cost effective



**Un-  
Strut Your  
Stuff...**

816.483.5314 phone  
816.483.6357 fax  
www.milbankmfg.com  
ConfId 04/05 (2.0A)

**MILBANK**  
MADE IN THE  
USA

### Recreational Vehicle Park Electrical Products & Accessories

Millennium Series

INCLUDES REPLACEMENT PARTS



**MILBANK**  
MADE IN THE  
USA

### Commercial Electrical Enclosures

**2006 PRICE LIST**  
Effective June 26, 2006

Supersedes and cancels all previous Milbank lists.  
All prices listed within are subject to change without notice.

rev. 7-27-06



**MILBANK MFG. CO.**  
4801 Doramus • PO Box 410028  
Kansas City, MO 64141-0028  
Tel: 816.483.5314  
Fax: 816.483.6357  
www.milbankmfg.com

**MILBANK**  
MADE IN THE  
USA

Contact your local distributor or go to: [www.milbankmfg.com](http://www.milbankmfg.com)  
to find additional product literature.

## Other Quality Products Available from...

**MILBANK**

[www.milbankmfg.com](http://www.milbankmfg.com)

*In addition to your local utility's meter mounting equipment,  
Milbank also manufactures supporting products, such as...*

**Air Conditioner Disconnects**

**Hot Tub Disconnects**

**RV/Mobile Home Power Outlets**

**Terminal Boxes**

**Temporary Power Outlets**

**Commercial Pedestals**

**Commercial Enclosures**

**CT Enclosures**

**Circuit Breakers**

**Enclosed Circuit Breakers**

**Safety Switches**

**Test Switches**









# Meter Mounting Equipment & More!

**Commercial Electrical Enclosures**

**Residential & Commercial Metering**

**Commercial Meter Pedestals**

**Disconnect Devices**

**Current Transformer Enclosures**

**RV/MH Pedestals**

**Temporary Power Outlets**

**Circuit Breakers**

**Enclosed Circuit Breakers**

**Safety Switches**

**Test Switches**



## **DELANDSHEER SALES**

1011 W. 46th Avenue

Denver, CO 80211

Tel: 303-202-2990

Fax: 303-202-2991

## **MILBANK MFG. CO.**

PO Box 419028

Kansas City, MO 64141-0028

Tel: 816-483-5314 Fax: 816-483-6357

Toll Free: 877-483-5314

[www.milbankmfg.com](http://www.milbankmfg.com)

**MILBANK®**



[www.milbankmfg.com](http://www.milbankmfg.com)

**COLO 8/10 (2K)**